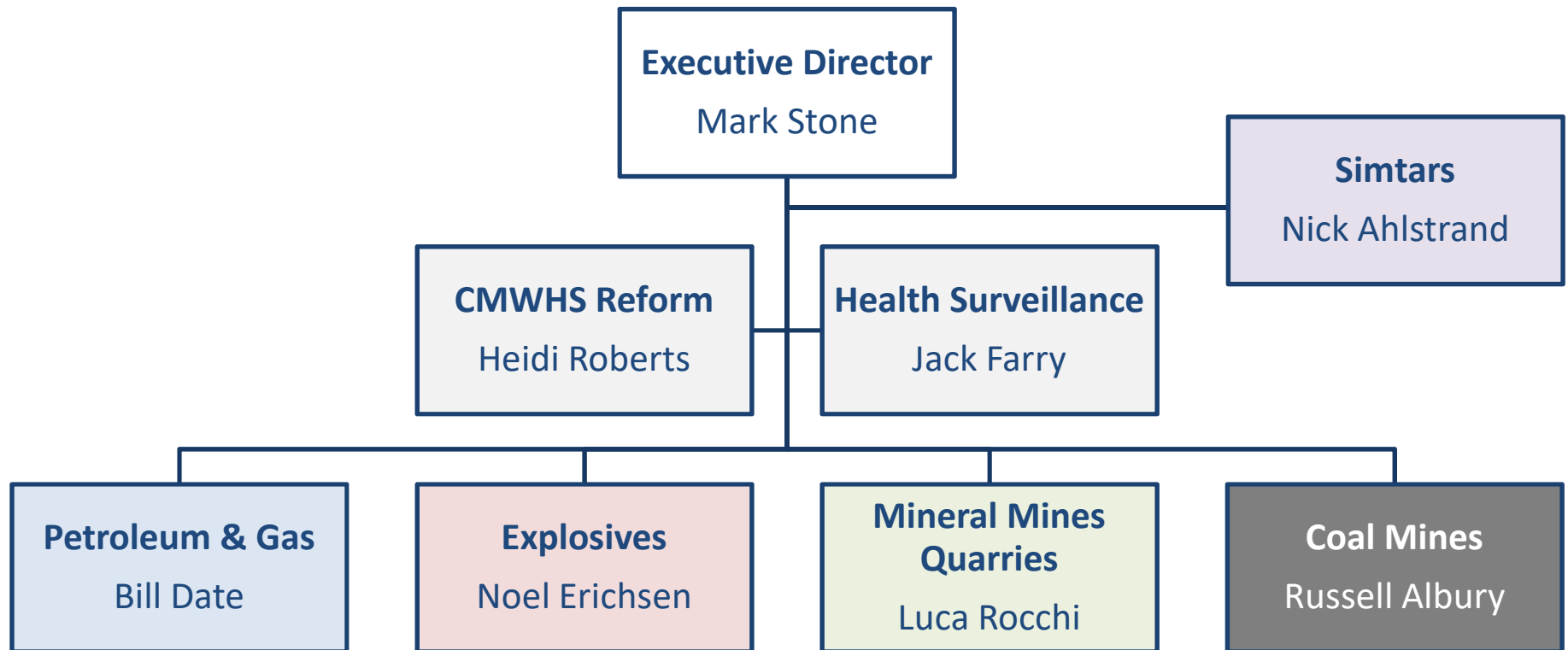


Industry leaders briefing

Mark Stone, Executive Director

27 October 2017

Mine Safety & Health – Organisation



Mine Safety & Health – Inspectors



■ Coal (21)

■ Mineral Mines and Quarries (22)

■ Explosive (19)

■ Petroleum and Gas (25)

Operating environment

- Risk based regulation
- Addressing occupational health harm
- CWP Select Committee recommendations