

Serious accidents and high potential incidents

Mineral mines and quarries

Compilation of reports for February 2017

Gravity

Fall of equipment/material (1)

- The head of a sledgehammer dislodged during use and fell 6 m onto a walkway.

Fall of ground (4)

- Approximately 11 t of ground fell from a cave draw point brow onto the rill.
- While a miner was scaling the face of a heading a key block dislodged and approximately 50 t of material fell and rilled onto the jumbo booms and back to the jacks. As a result, a void was exposed into an old stope which was thought to be further away from the development.
- A 40 kg rock fell from the back of an access drive and struck the bonnet of a light vehicle.
- Material from a rockfall over-ran a catch bund and fell to the bottom of the pit.

Fall of vehicle (1)

- A pillar under a drive cracked and opened, creating a void, while a loader was being used to clean up wet material in the drive.

Inundation/engulfment (1)

- A Komatsu loader was removing material from a stockpile when the face of the stockpile collapsed. The falling material damaged the windscreen.

Electrical

Electric shock (1)

- A worker received an electric shock turning on a light switch. The switch was found to have condensation in the mechanism.

Arc flash/blast (2)

- An electrician was tasked with the disconnection of a pump. After isolating the correct pump, the electrician then proceeded to disconnect another pump that had not been isolated. During this process, the tools being used created an arc from live parts to earth.
- While preparing to drill pin holes to anchor a trailing cable adjacent to a starter box, the operator of a Tamrock Jumbo lowered a jack down onto a live cable, causing the power to trip.

Other (1)

- During air arc gouging on a thickener, the electrode lead became caught on the thickener rake. When the lead was pulled, the insulation was torn back allowing the welding lead to short on the agitator blade. The current then flowed through the agitator motor and its earthing system, causing the components to overheat and produce smoke.

Biological

Bites (1)

- A quarry operator was bitten on the leg by a snake while preparing to fill a water cart. The operator was transported to hospital for assessment and treatment.

Mechanical

Caught in nip point (1)

- A worker was injured while performing maintenance work on an apron feeder. He was rotating the feeder by pulling on the drive v-belts, and caught his fingers in the drive sheave resulting in the loss of the tip of his little finger.

Other (1)

- The operator of a Komatsu WA600 loader noticed smoke coming from the front right hand tyre. The cause of the fire appears to be tread separation.

Thermal

Fire (1)

- Flames of 23 cm were observed during the electro fusion of a poly line.

Molten metal/material (1)

- When molten copper was cast into a ladle there was a release of steam and molten metal. The ladle had been removed from service earlier in the shift and had been mistakenly reinstated with residual water in it.

Exposure to hot surfaces/liquids (1)

- While discharging a final tails slurry sample pump, a fitting on the pump failed and a worker was sprayed on the left leg and right arm with hot slurry. The worker received minor blistering on the right for arm.

Vehicle

Collision with another vehicle (4)

- A contractor working from an EWP on a pipeline parked the machine within the exclusion zone of a thickener. The rake drive contacted the EWP and its basket hit the scaffold of the pipeline.
- At start of shift an excavator operator parked his light vehicle beside an excavator and proceeded to do a pre-start inspection on the excavator. The operator then slewed the excavator around and the counterweight struck the driver's side of the stationery ute.

- A loader at a quarry collided with the body of a truck in a stockpile area. The radios in the loader and truck were on different channels and neither were aware of the other's presence.
- While travelling down a ramp, the operator of a Cat 776D haul truck applied the retarder, resulting in the truck sliding and coming to rest on the opposite side of the haul road.

Collision with a natural or built structure (1).

- A Cat 773 truck was driven from a wash bay with the tub raised. The tub contacted a 415V power line that spanned a roadway.

Pressure

Other (2)

- Workers undertaking pipeline repairs on a filter feed pump isolated the wrong pump. The error was discovered before the pump was turned on.
- While preparing to continue down reaming a drill hole, the hole was injected with compressed air. As the pressure in the hole built up, it suddenly released from the surface diverter pipe causing a step to be washed away from underneath the driller. The driller fell, fracturing his forearm, and the supervisor was knocked over, sustaining bruising and minor abrasions.

Explosives

Misfire (1)

- An operator found detcord and emulsion in a muck pile due to a misfire as the cord for the hole was disconnected from the other holes.

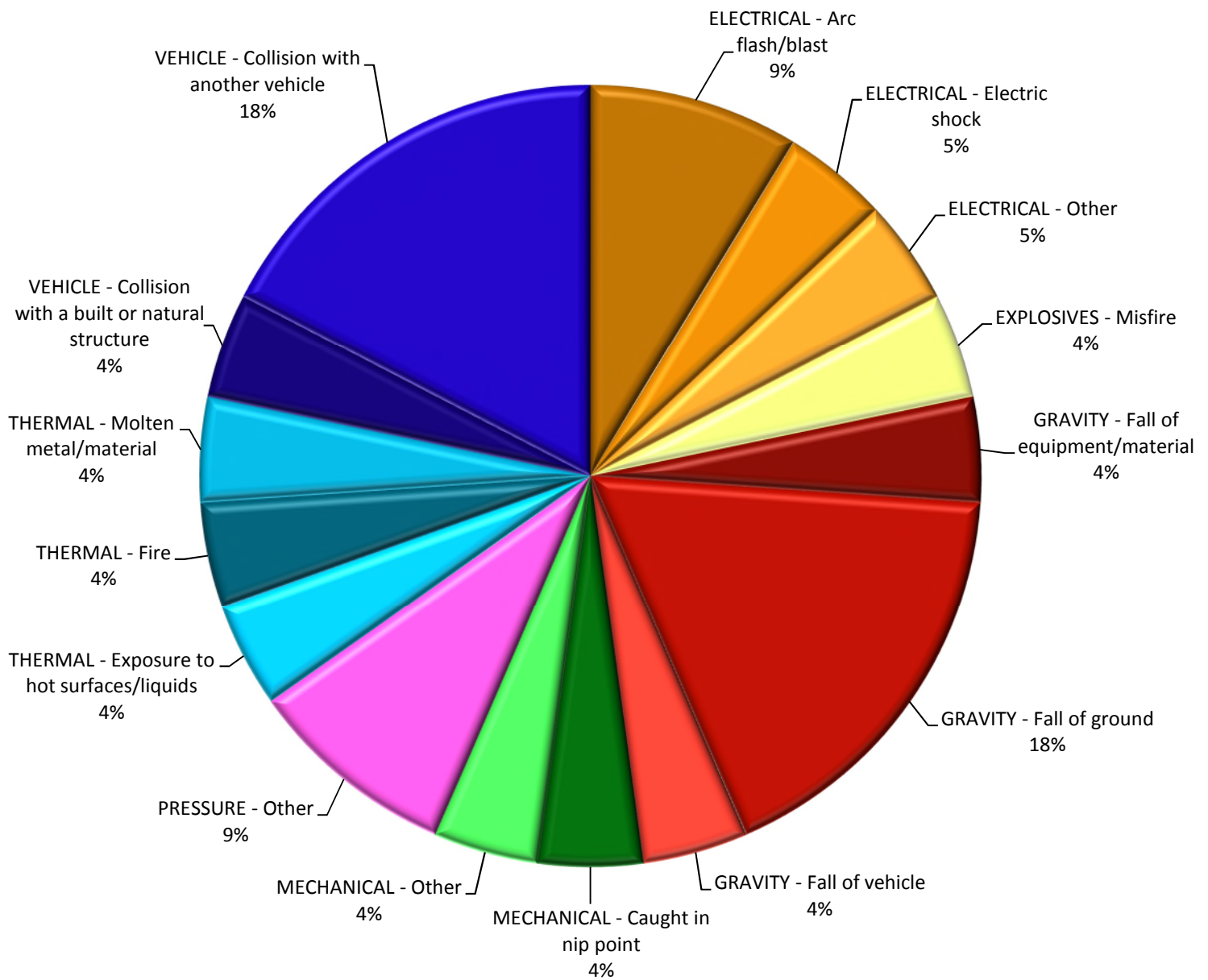


Chart 1 - February 2017 (23 Incidents)

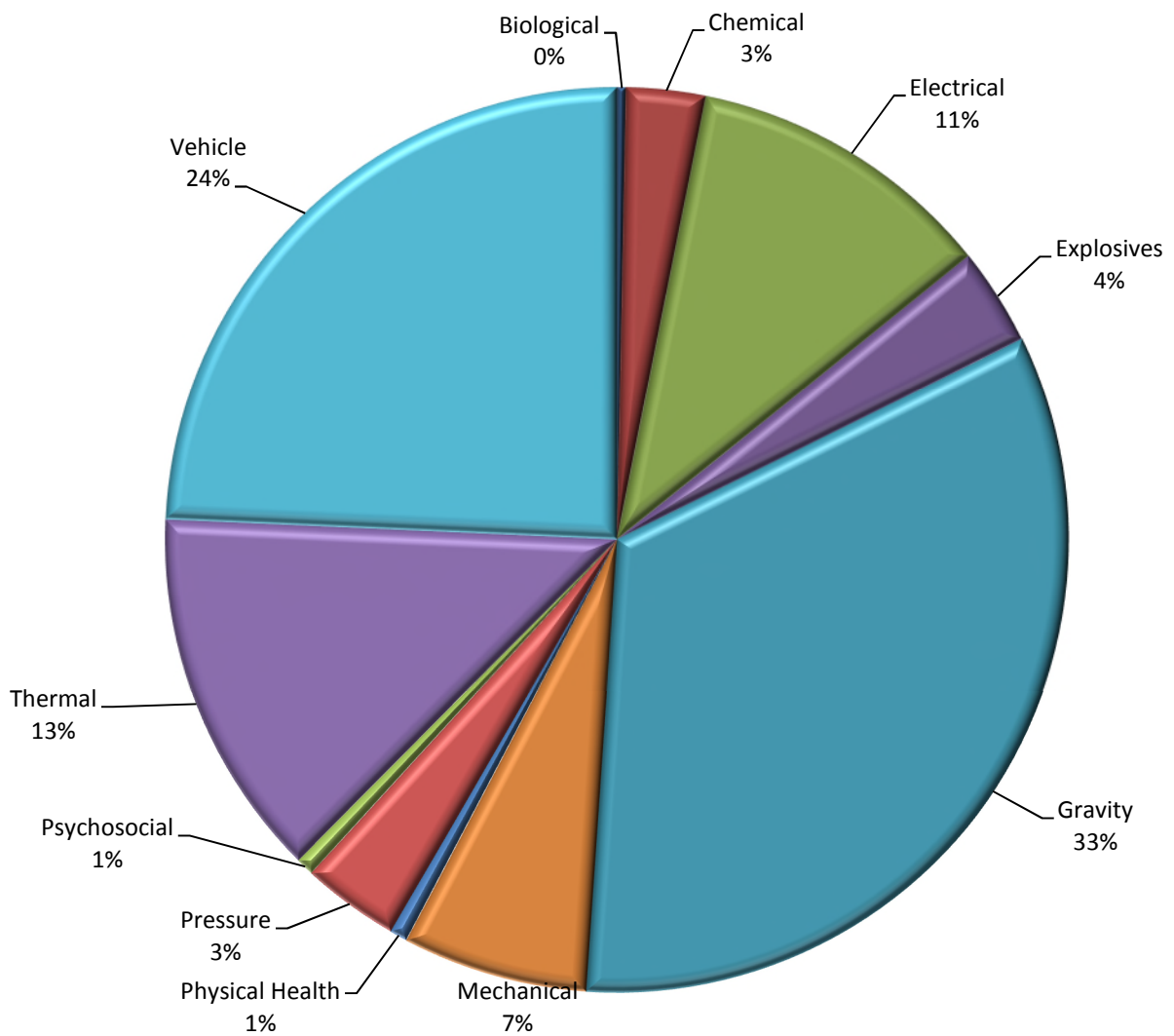


Chart 2 – 12 month rolling average to end February 2017 by Hazard Category (317 Incidents)

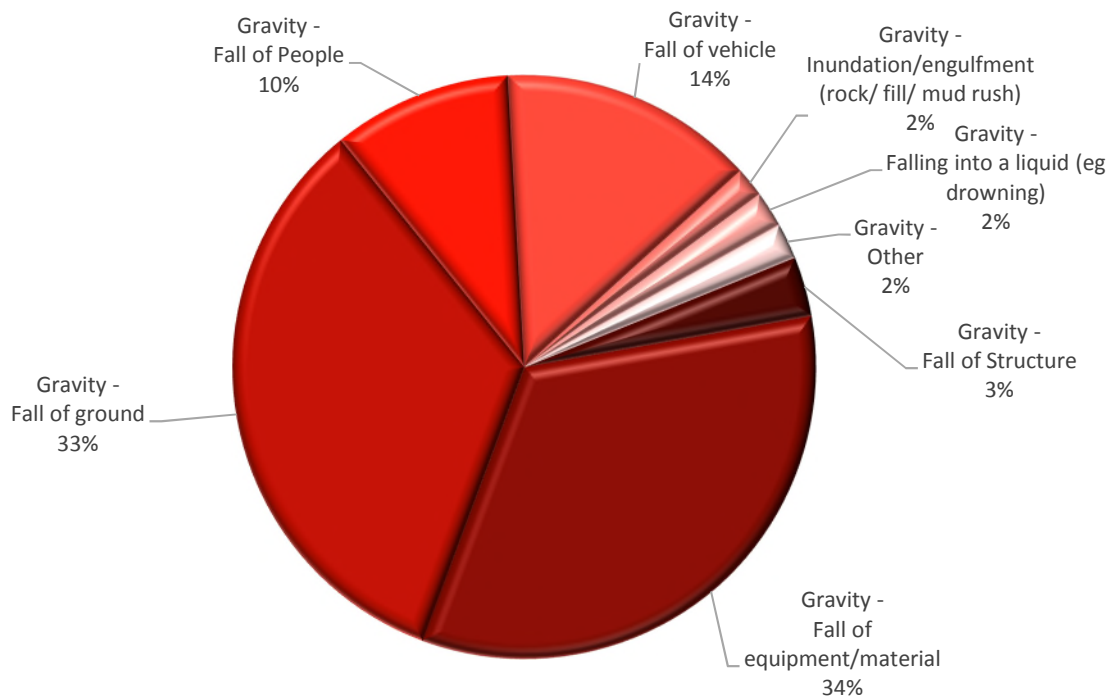


Chart 3 - July to February 2017 Breakdown of Gravity Hazard Category (74 Incidents)

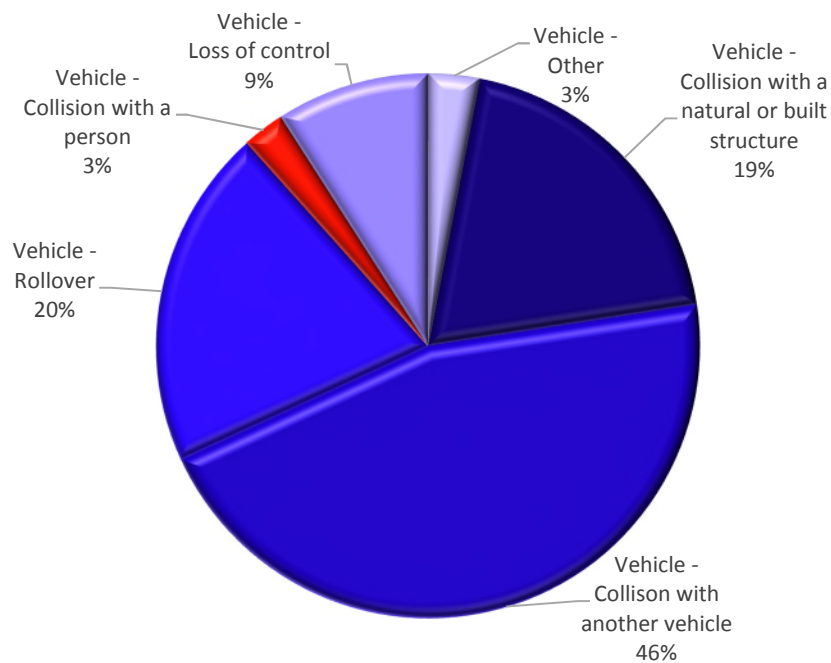


Chart 4 - July to February 2017 Breakdown of Vehicle Hazard Category (46 Incidents)

Past Mineral Mines and Quarry summary reports can be sourced at
<https://www.business.qld.gov.au/industry/mining/safety-health/mining-safety-health/accidents-incidents/serious-and-high-potential>
