

Serious accidents and high potential incidents

Mineral mines and quarries

Compilation of reports for April 2017

Gravity

Fall of people (3)

- A crane operator rolled their ankle while exiting the cab of a crane.
- A driller's assistant walked into a fallen tree branch striking his shin. A blood clot developed and his leg swelled as a result.
- A worker fell 1.2 m onto a concrete floor when they were climbing from the loader and missed a foothold.

Fall of equipment/material (3)

- While a Tandano 200 t crane and a Franna 22 t crane were completing a duel lift, the load moved causing the Franna to tip onto its side.
- A contractor was hit on the back of the head when a chain block and sling he was using to align pipework failed while under tension.
- A piece of gypsum scale fell from an overland conveyor frame, narrowly missing nearby workers.

Fall of ground (4)

- A 300 t rockfall occurred in the backs of a drive. Six hours earlier, workers heard rock noises and had barricaded the area off.
- As a result of firing of a bench blast, a 100 kg rockfall in the backs occurred 390 m away from between installed ground support.
- Approximately 50 kg of rock fell from a wall that had been identified for rehabilitation. There was no barrier to prevent worker access to the area.
- During routine inspections, a mine supervisor found a 40 t rockfall in a restricted area of a mine.

Fall of structure (1)

- A section of flashing from a roof became detached and fell 12 m.

Vehicle

Collision with another vehicle (3)

- As a charge car drove down a decline, a Cat loader, followed by a Toyota, pulled into a recess to allow the charge car to pass. The loader driver was not aware they Toyota had also pulled into the recess, and after the charge car had passed, the loader reversed out of the recess, pushing the Toyota 3 m backwards.
- A Cat 970 loader reversed into a Cat 770 rear dump truck. The truck driver had called the loader driver but did not receive a reply from the loader driver before entering the work area.
- Due to the failure of a truck driver to contact the driver of a Komatsu WA500 loader before entering the loaders work area, the loader reversed into the dog trailer.

Collision with a natural or built structure (2)

- An integrated tool carrier rolled 45 m down a decline coming to rest against a wall. There was nobody in the machine at the time.
- The driver of a Cat 777F Rear dump truck lost control on a haul road when the engine shut down. The previous driver had initiated a timed engine shutdown and the new driver was not aware that the shutdown sequence had been initiated prior to driving onto the haul road.

Electrical

Electric shock (1)

- A diamond drill offsider received an electric shock to their forearm when they attached a Stilson to the stuffing box on the rig.

Arc Flash/blast (2)

- During commissioning of an 11 kV voltage transformer, the transformer failed catastrophically. The electrical protection operated and the cabinet suffered damage.
- During RCD testing, a phase to phase fault was initiated between two circuits when the selector switch was operated.

Mechanical

Entangled in rotating plant (1)

- The operator of a hand held drill and air leg suffered lacerations to their thumb when his glove became entangled while collaring a drill steel.

Crushed between a load and structure (1)

- After cleaning build-up in an acid leach tank, a mechanical crew using an EWP removed a large steel cone from the bottom of the tank to drain the remaining material. The rigging used to hold the cone failed and the cone dropped pushing the EWP against a structure.

Caught in a nip point (1)

- While lowering a cable into a shaft from the top of a winder, a worker slipped and placed his hand on a nip point. The cage ran over the worker's hand.

Struck by a projectile (1)

- While replacing a wear plate in a Barmac crusher, a small piece of steel chipped off one of the tools and lodged in the fitter's left forearm.

Thermal

Fire (6)

- During repairs to a loader, the workers noticed smoke coming from the vents of their welding machine.
- During welding on a screen, hot material fell onto the polyurethane screen. Emergency services were called to extinguish the fire.
- While fault finding in the cabin of a truck, the auto electrician sprayed contact cleaner onto the cables. A short circuit on a cable ignited the contact cleaner, resulting in a fire in the cabin of the truck.
- While refuelling a CAT 725 water truck, the operator noticed a burning smell. The operator stopped refuelling and inspected the truck, finding a small fire at the rear of the truck.
- To allow oxy-acetylene equipment to be used on a bucket elevator, two lengths of hose were joined together. The acetylene joiner failed and the leaking gas was ignited. As soon as the spotter noticed the fire, the gas supply was shut off.
- Smoke was seen to be coming from the engine bay of a Cat 825K Compactor. The source of the fire was a failed oil line that sprayed oil onto the turbo.

Molten metal/material (2)

- During smelting operations, an expulsion occurred from the feed port of the furnace, resulting in the ejection of molten material and dust.
- Following resumption of smelting operations after an expulsion event, a second expulsion occurred from the feedport of a smelter, resulting in another ejection of molten material and dust.

Explosives

Overpressure (1)

- An exceedance of the overpressure limit occurred during blasting at a quarry.

Security (2)

- A consignment of explosives had been delivered to a mine from Dyno Nobel. On delivery of the explosives it was identified that 2 extra boxes of Primacord had been sent to the mine by mistake.
- A quantity of primers with inserted detonators had been left unsecured and unattended in a drive at the mine for around 3 hours. The explosives were picked up and transported in an unsafe manner to another location at the mine.

Unintended Detonation (1)

- While using a light vehicle to remove a mobile lighting tower from a shot in preparation for a blast, a light vehicle drove to within 1 m of a detonator signal tube.

Non Hazard Specific

Mine Plans (1)

- During an inspection after the firing of a development face, it was found that the void of a nearby stope had been intersected.

Extreme weather (1)

- Due to the high winds associated with a storm, sand around the base of an 11kV power pole blew away and allowed the pole to partially fall over. The stay supported the pole and prevented ground contact by the live wires.

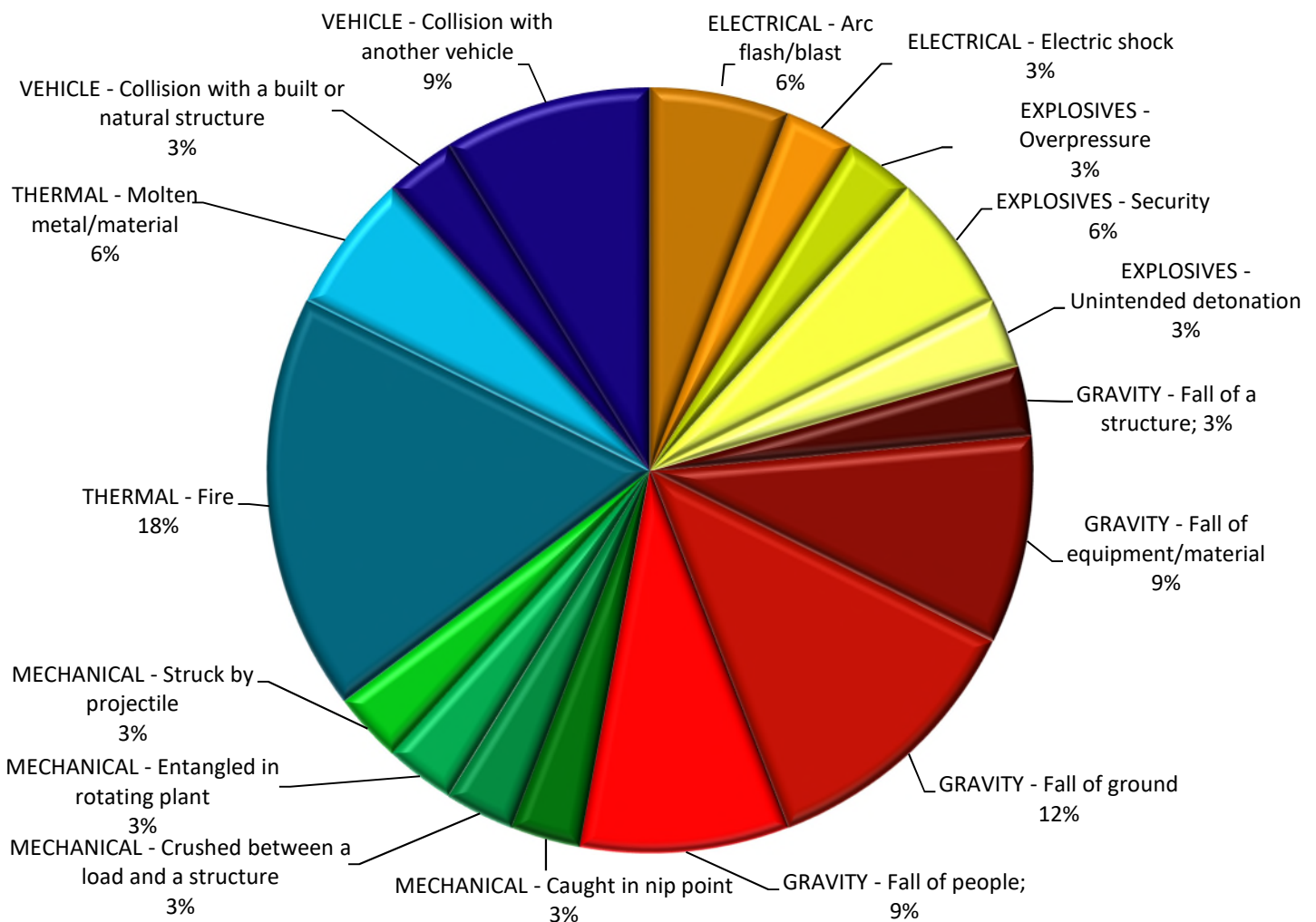


Chart 1 – April 2017 (39 Incidents)

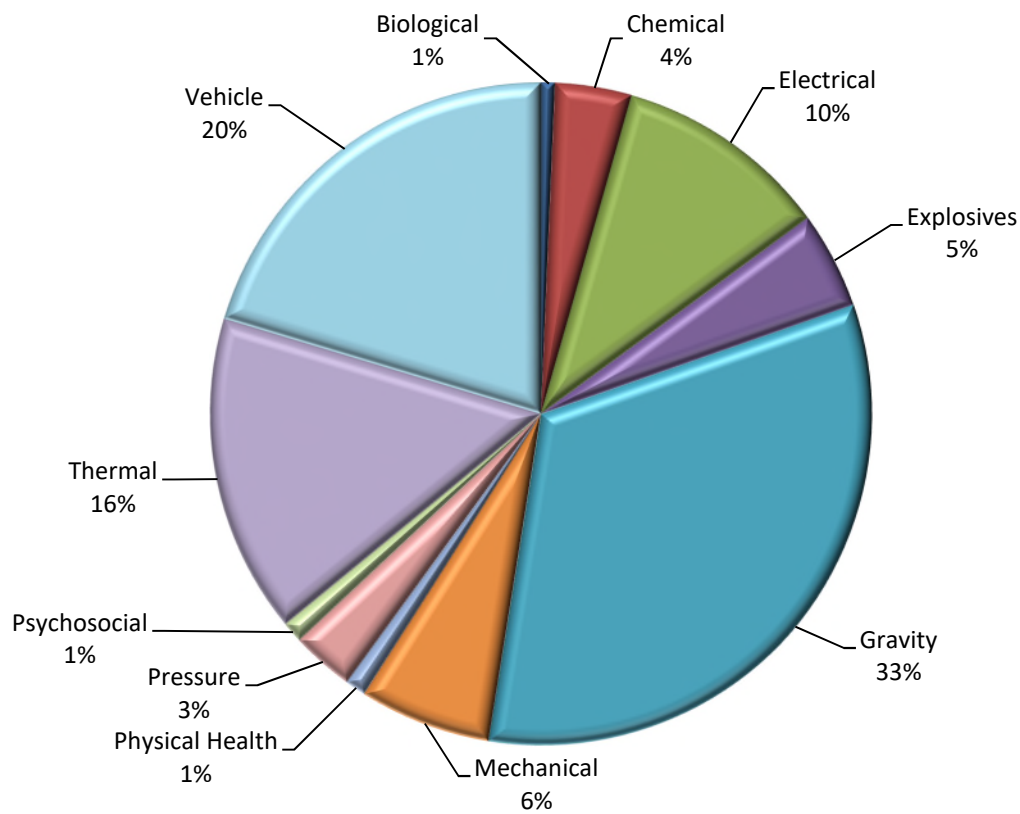


Chart 2 – 12 month rolling average to end April 2017 by Hazard Category (308 Incidents)

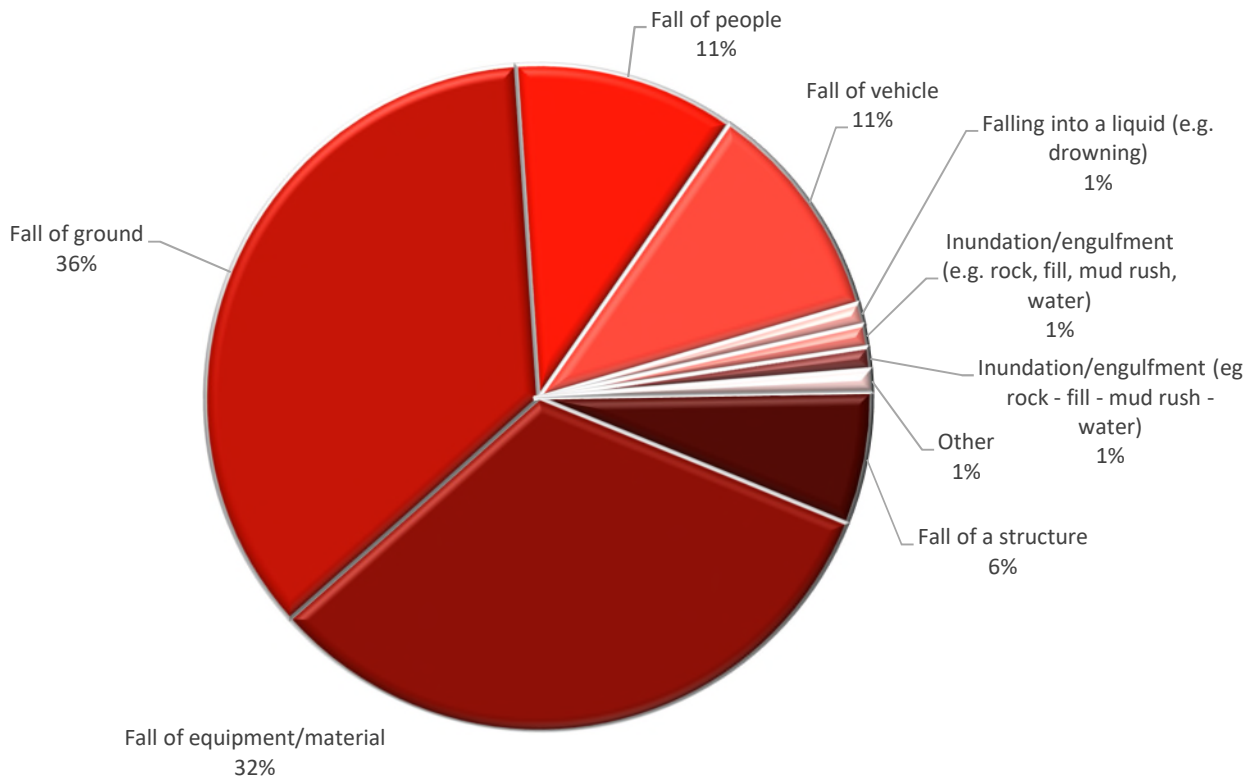


Chart 3 - July to April 2017 Breakdown of Gravity Hazard Category (97 Incidents)

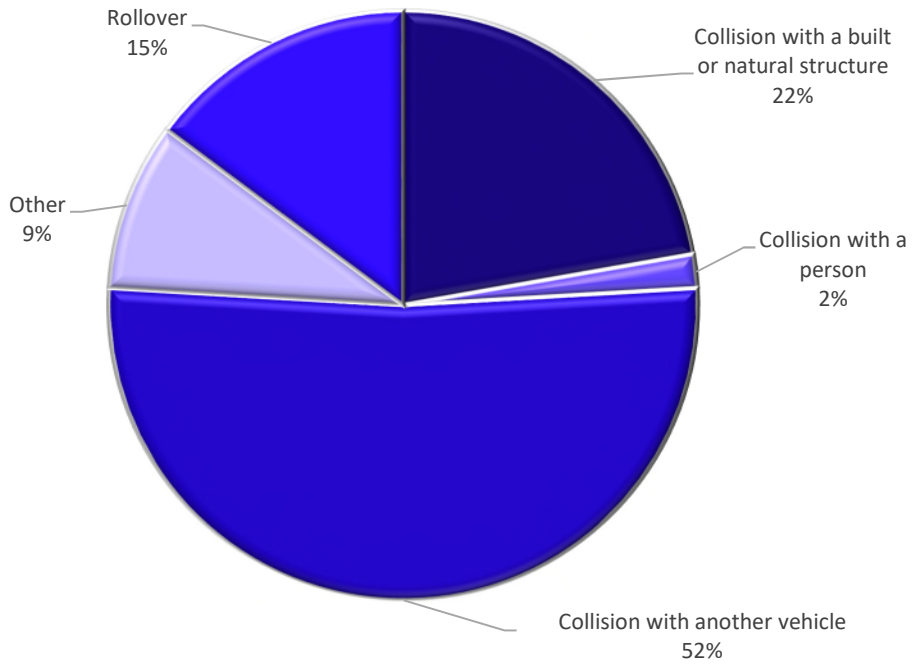


Chart 4 - July to April 2017 Breakdown of Vehicle Hazard Category (54 Incidents)

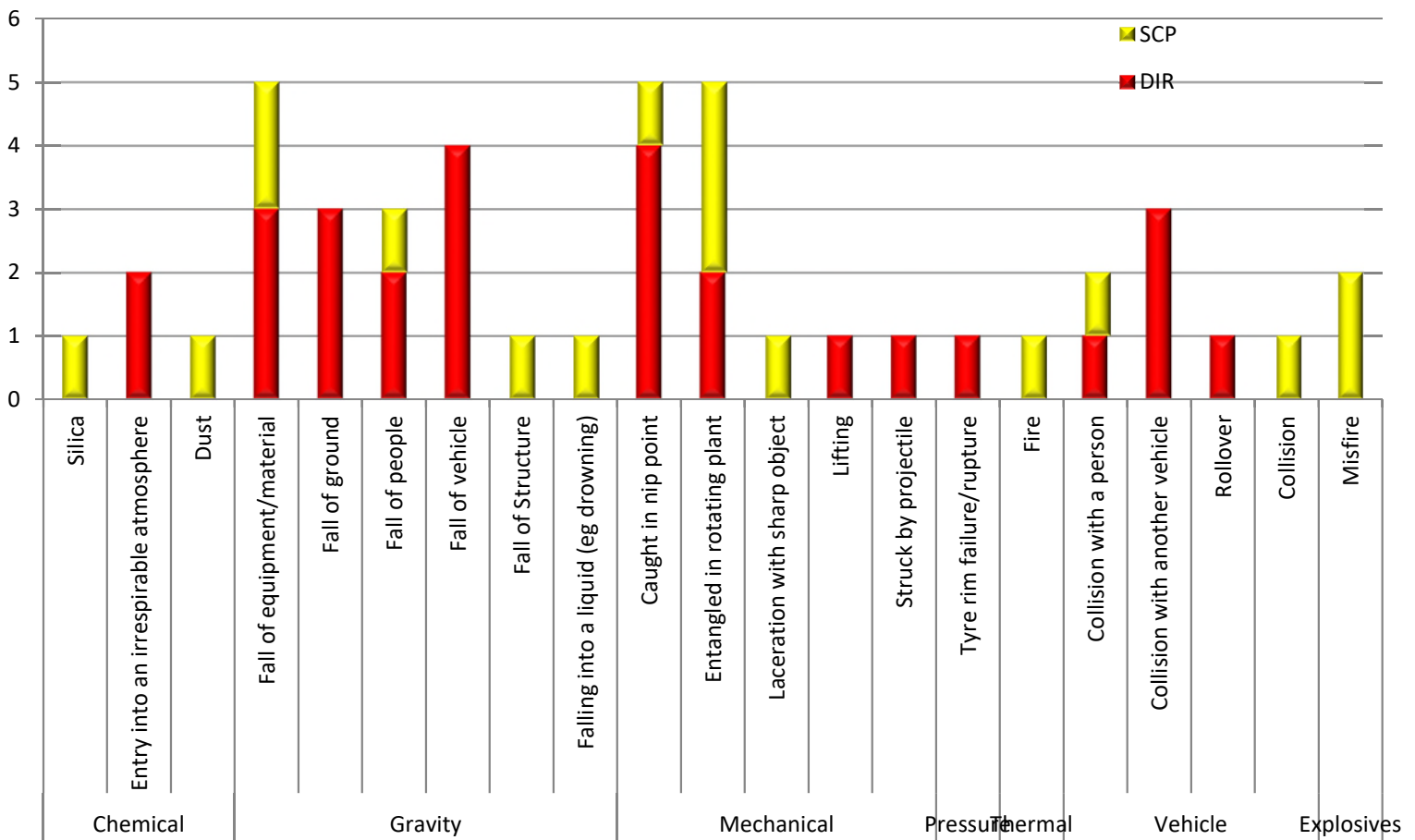


Chart 5 - April 2017 Compliance Matters Issued by Hazard Category (45 Issued)

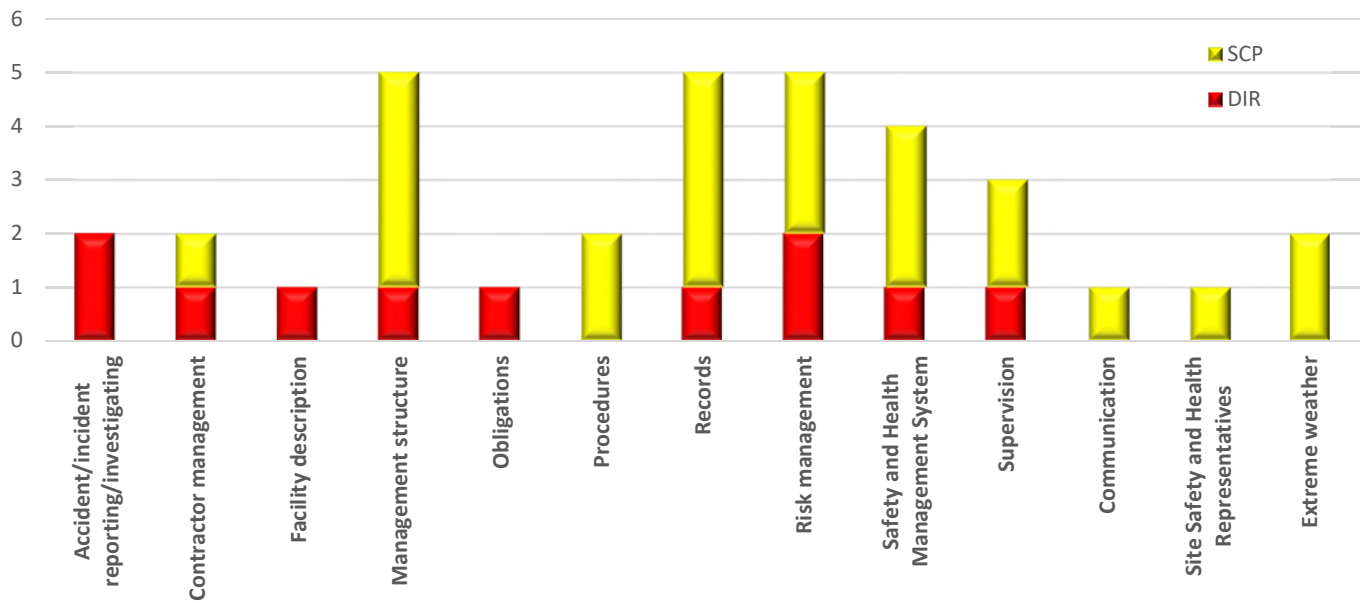


Chart 6 - March 2017 Compliance Matters Issued by Non Hazard Category (34 Issued)

Past Mineral Mines and Quarry summary reports can be sourced at <https://www.business.qld.gov.au/industry/mining/safety-health/mining-safety-health/accidents-incidents/serious-and-high-potential>