

# Serious accidents and high potential incidents

## Mineral mines and quarries

### Compilation of reports for June 2017

#### Gravity

##### Fall of vehicle (2)

- Two workers witnessed a sink-hole open up in front of a longhole drill rig. The sink-hole was 3.5 m wide, 6 m long and 1.5 m deep.
- While driving an AIG truck, the operator heard a loud noise and parked the truck in a cuddy to investigate. On inspection, the driver found that the wheels nuts were missing from one wheel.

##### Fall of ground (3)

- A section of a wall slipped after blasting activities.
- During rehabilitation activities, a 500 t rock fall occurred in front of a jumbo. The material rilled to the jacks on the jumbo.
- During re-entry into a section of the mine, workers discovered a 200 t rockfall.

##### Inundation/engulfment (3)

- Material rilled out of a draw point. At the 20 m exclusion zone, the material was the same depth as the bigger tyre.
- During routine checks of a closed draw point material was found to have rilled out beyond the exclusion zone.
- A mesh paste fill wall failed allowing 2000 t of paste fill to flow out, over a bund wall into a drive, past a 'no travelling' barricade, and onto a decline.

##### Fall of equipment/material (1)

- During set up of a raise bore drill rig, the rig fell to one side with the mast coming to rest on the sidewall.

#### Fall of people (3)

- A worker entered a jaw crusher to remove two rocks that had bridged in the jaws. During the clearing of the rocks, the worker slipped and fell 800 mm.
- A worker was attempting to access the mast of a drill rig from the roof of a core shed. A ladder was set up in the rear of a ute, to access the 2.9 m roof. The workers were not wearing fall protection.
- A worker was descending a ladder and stepped sideways off the ladder onto a 1.1 m bund. As he did, the ladder slipped sideways causing the worker to fall.

#### Pressure

##### Tyre rim failure/rupture (1)

- Position 5 and 6 tyres deflated while a truck was in use. Tyre Fitters were called to site to investigate the cause of the deflation, and found the wheels were fitted with incompatible lock ring and rim components.

#### Thermal

##### Fire (3)

- When a Volvo A25C service truck was parked, the park brake caught fire, due to a build-up of hydrocarbons and a dragging brake.
- A fire was observed in the engine bay of a Cat D10 dozer. The cause of the fire was due to a build-up of leaves and debris being in contact with turbo.
- A fire occurred in the engine bay of a Cat 777 rear dump truck due to diesel leaking from the fuel filters.

## Vehicle

### Collision with another vehicle (3)

- While a Cat 988 loader was being used to clean around conveyors, a Cat 773 truck entered the work area, without the truck operator receiving confirmation to enter the loader's work area. The loader reversed into the truck.
- The driver of a Cat 980K loader entered the work area of a Cat 980H loader without permission. The 980H reversed into the 980K making minor contact.

### Collision with a person (1)

- While a worker was placing witches hats around an excavator's work area, the excavator operator swung the machine, narrowly missing the worker with the machine counterweight. The excavator operator was not aware of the location of the person setting up the witches hats.

### Collision with a natural or built structure (1)

- As a 25 t rear dump truck was travelling down a ramp, the operator applied the brakes and lost control. The truck mounted the bund and was stopped.

### Rollover (1)

- As a loaded Cat Moxi steered to the left at an intersection to avoid another Moxi, the bowl section of the machine rolled over.

### Other (1)

- During the loading of an excavator onto a low loader, the truck and trailer ran away. The park brake had been applied and when the excavator climbed on the trailer, the drive wheels on the prime mover were lifted off the ground, allowing the rig to move.

## Mechanical

### Other (1)

- While a production drill was drilling a paste fill hole, it broke through to the level below and in close proximity to a jumbo.

### Crushed between a load and a structure (1)

- A worker was operating a tuyere puncher on a copper converter when the converter unexpectedly rolled up. The puncher was lifted off the floor, into the curtain hood above it. The worker exited the puncher as soon as it started to move.

### Laceration with a sharp object (2)

- A trade's assistant sustained lacerations to his left thumb when taking off the sharp edges of a hinge, using a pedestal grinder.
- A worker was using a pinch bar to dislodge material built up in an operating pin mill chute, when the pinch bar was caught in the mill and was ejected, striking the worker on the cheek.

## Explosives

### Misfire (5)

- Explosive product was found while an excavator was moving a muck pile.
- A small amount of explosives was found during the loading out of a muck pile.
- An excavator operator found explosive material and down-hole line when loading out previously shot material.
- During digging of blasted material, the operator of the digger observed that a misfire had occurred.
- While digging blasted material from within a pit. The operator of the digger observed a misfire. Excavation ceased and a shot firer was called to attend to the misfire.

### Security (1)

- A magazine keeper identified that a new box of Powermite Pro had been packed with 19 cartridges instead of 20.

## Biological

### E coli/Salmonella (1)

- It was discovered that valving had been installed that allowed the connection of raw water to potable water.

## Physical Health

### Underlying medical/physical condition (2)

- A miner went missing and was found deceased at the bottom of the opal mine shaft. He was removing the ladders when he had a heart attack.
- An operator stepped out of loader and reported to the SSE that he had sciatic nerve issues and was having pain in their legs.

## Psychosocial

### Fatigue (1)

- An operator had a micro-sleep on the 8<sup>th</sup> load for the day.

## Electrical

### Electric shock (1)

- Following hosing out of a workshop, a worker received an electric shock from the door controller.

## Non Hazard Specific

### Security (1)

- The SSE of a quarry noted that trespassers had been onsite and that they had thrown rocks onto the windscreen of a light vehicle.

### First Aid (1)

- A worker greasing the tail drum on a mobile striker screen, struck their head on a door when they stood up. The worker suffered pins and needles and was transported to hospital for assessment and treatment.

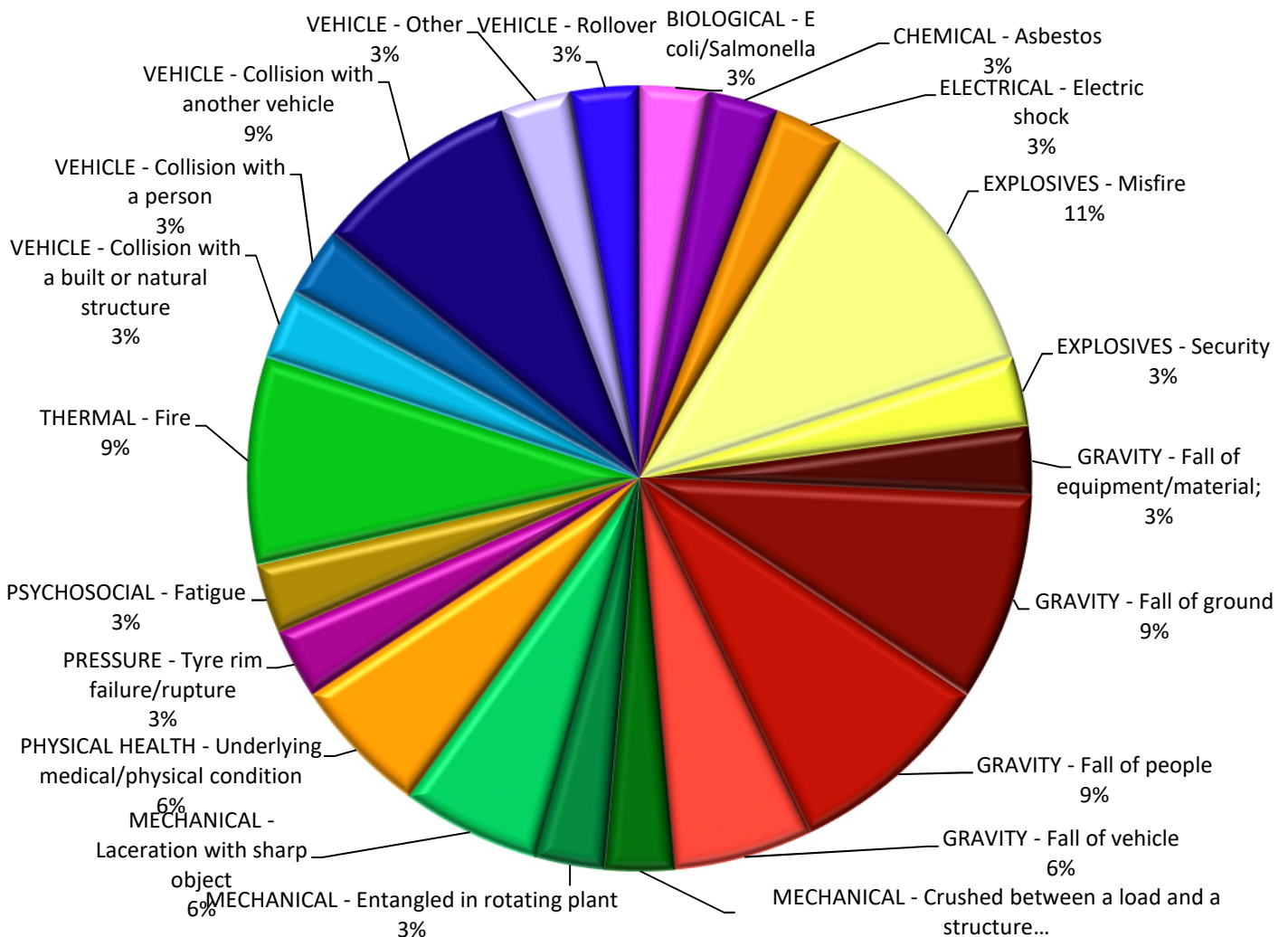


Chart 1 - June 2017 (41 Incidents)

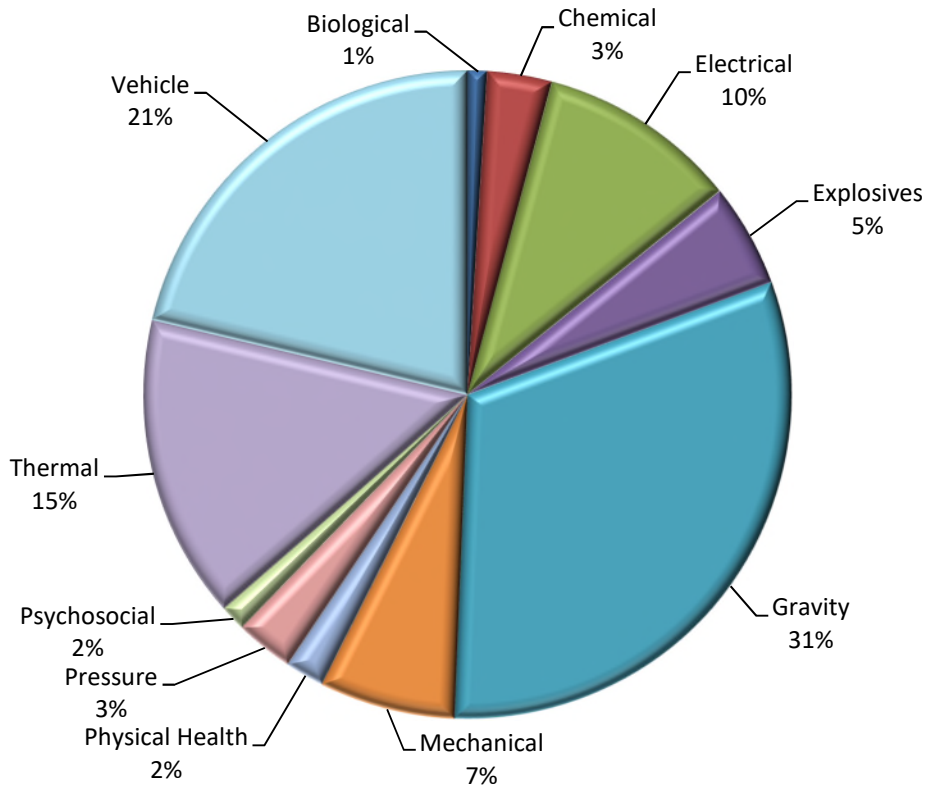


Chart 2 - 12 month rolling average to end June 2017 by Hazard Category (310 Incidents)

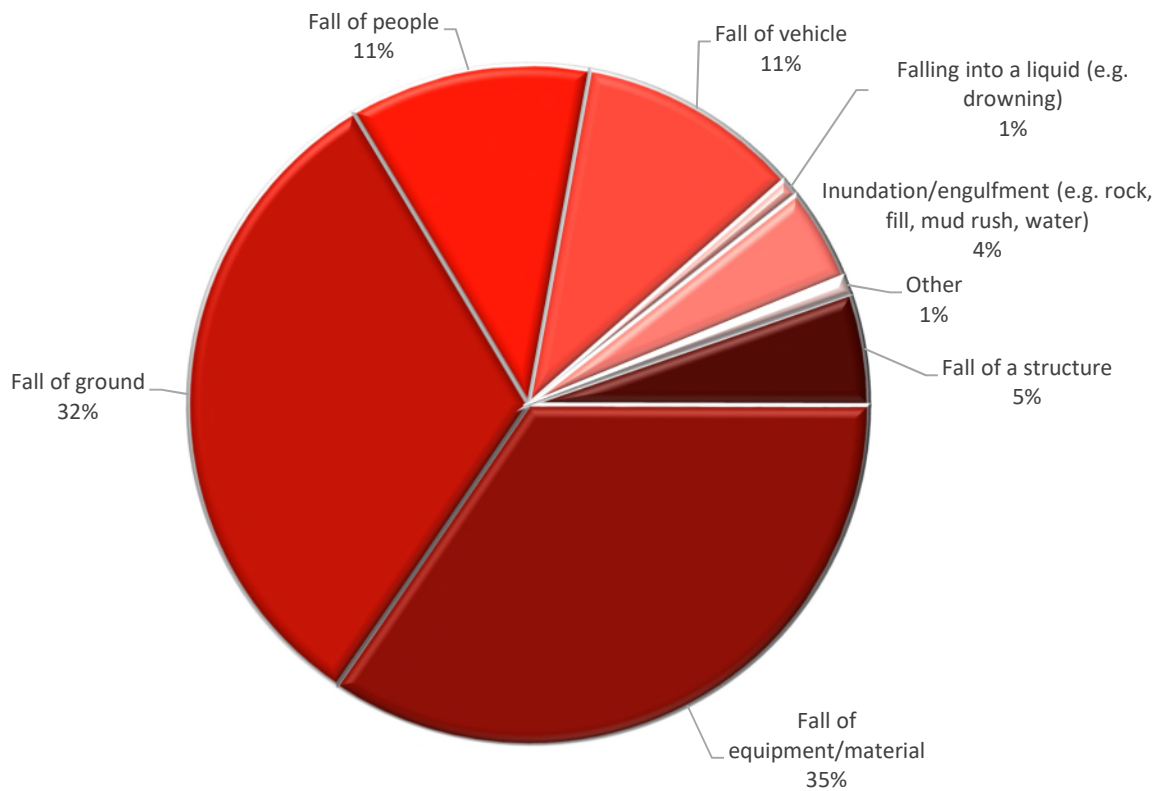


Chart 3 - July 2016 to June 2017 Breakdown of Gravity hazard category (113 Incidents)

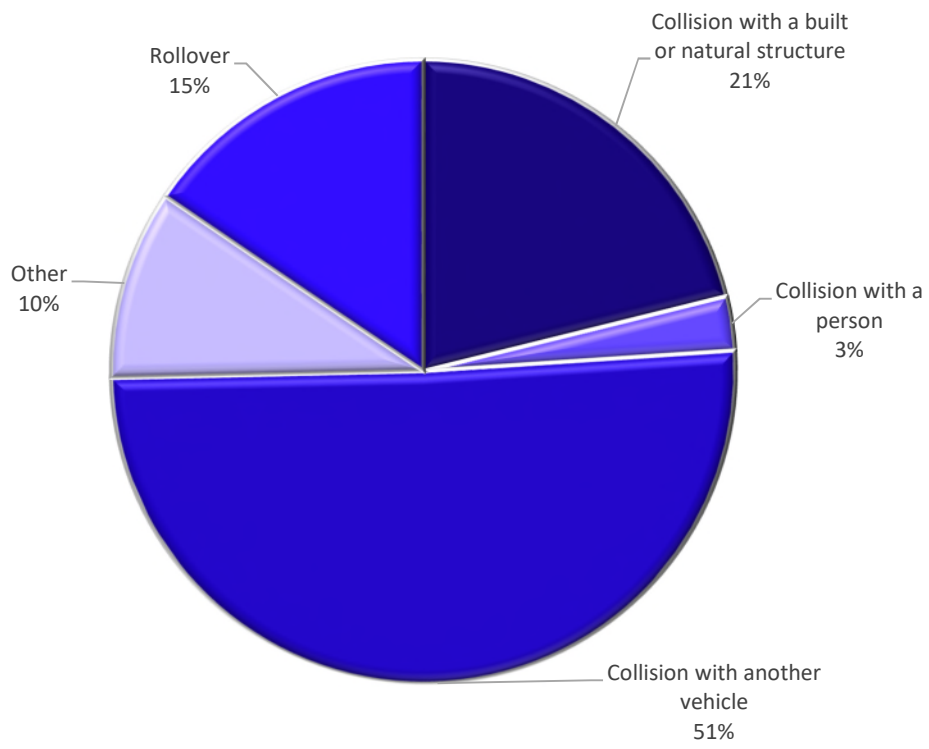


Chart 4 - July 2016 to June 2017 Breakdown of Vehicle hazard category (71 Incidents)

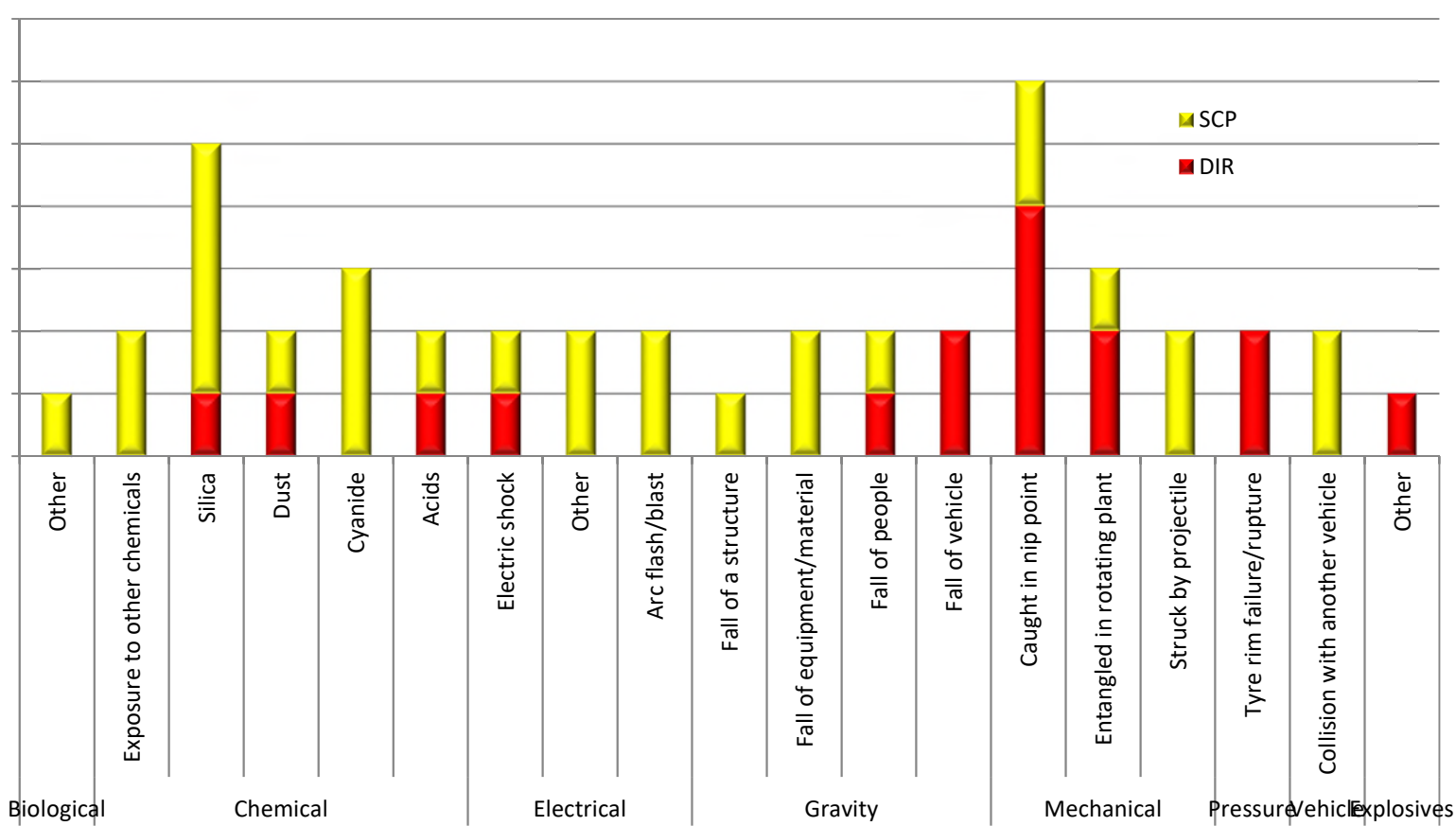


Chart 5 - June 2017 Compliance matters issued by Hazard category (44 Issued)

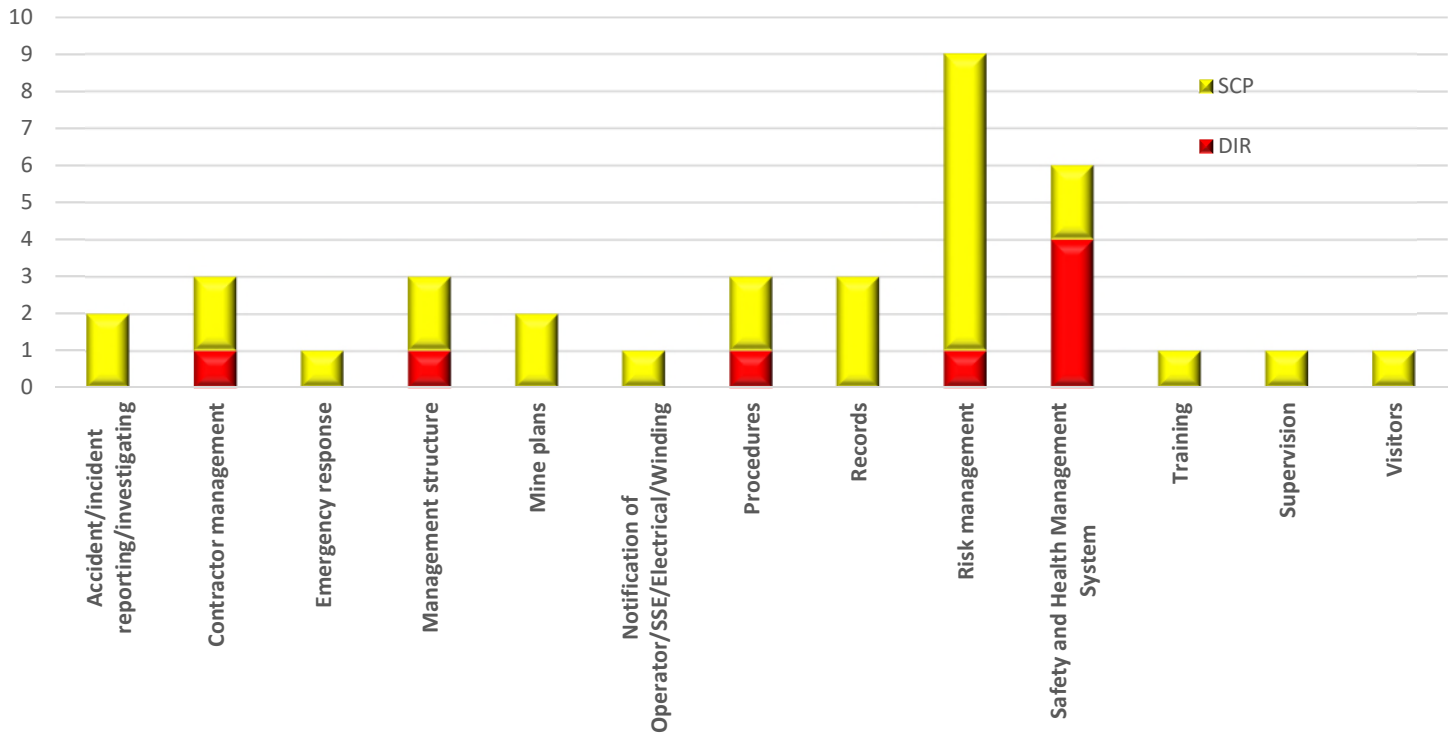


Chart 2 - June 2017 Compliance matters Issued by Non Hazard category (36 Issued)

---

Past Mineral Mines and Quarry summary reports can be sourced at  
<https://www.business.qld.gov.au/industry/mining/safety-health/mining-safety-health/accidents-incidents/serious-and-high-potential>

---