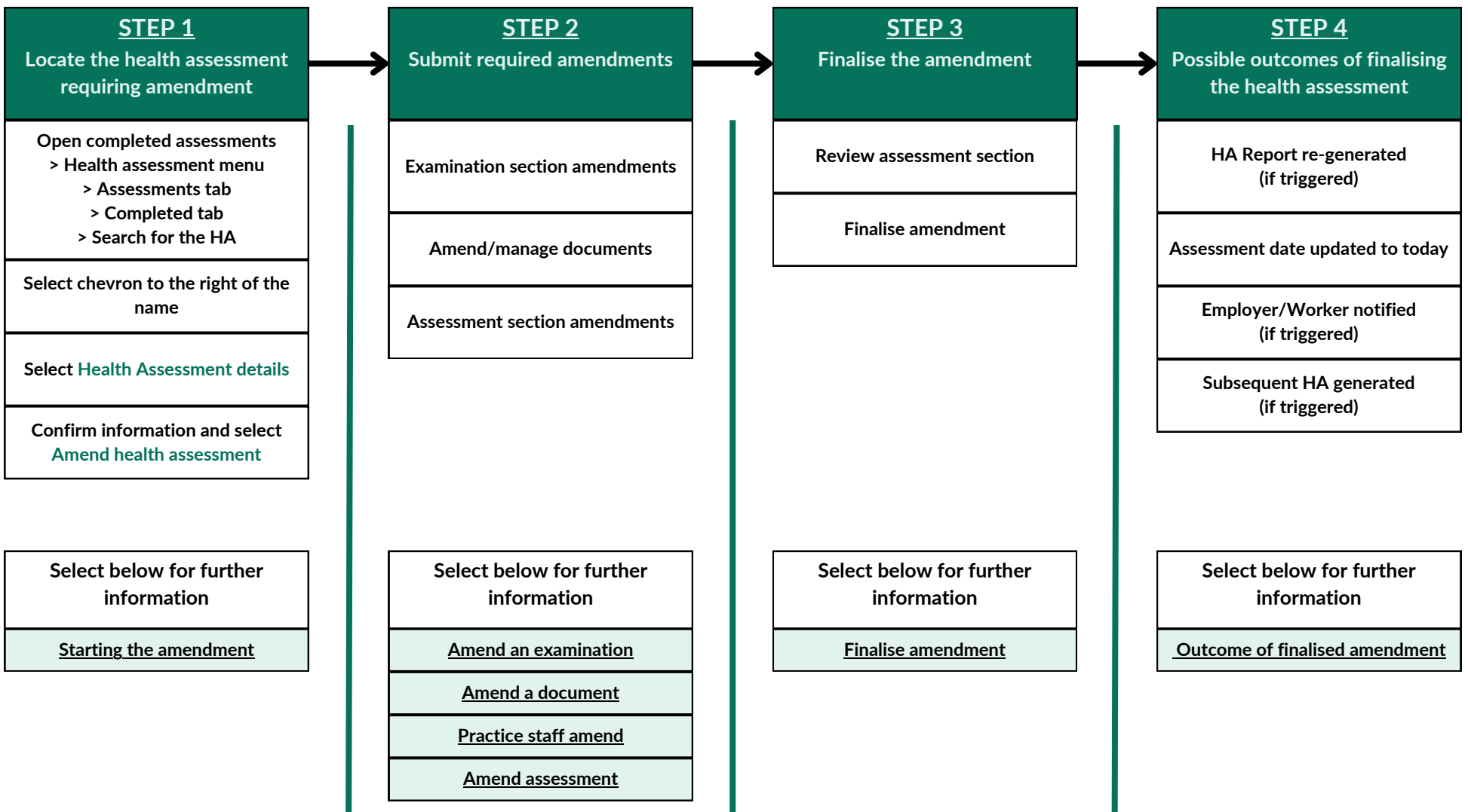
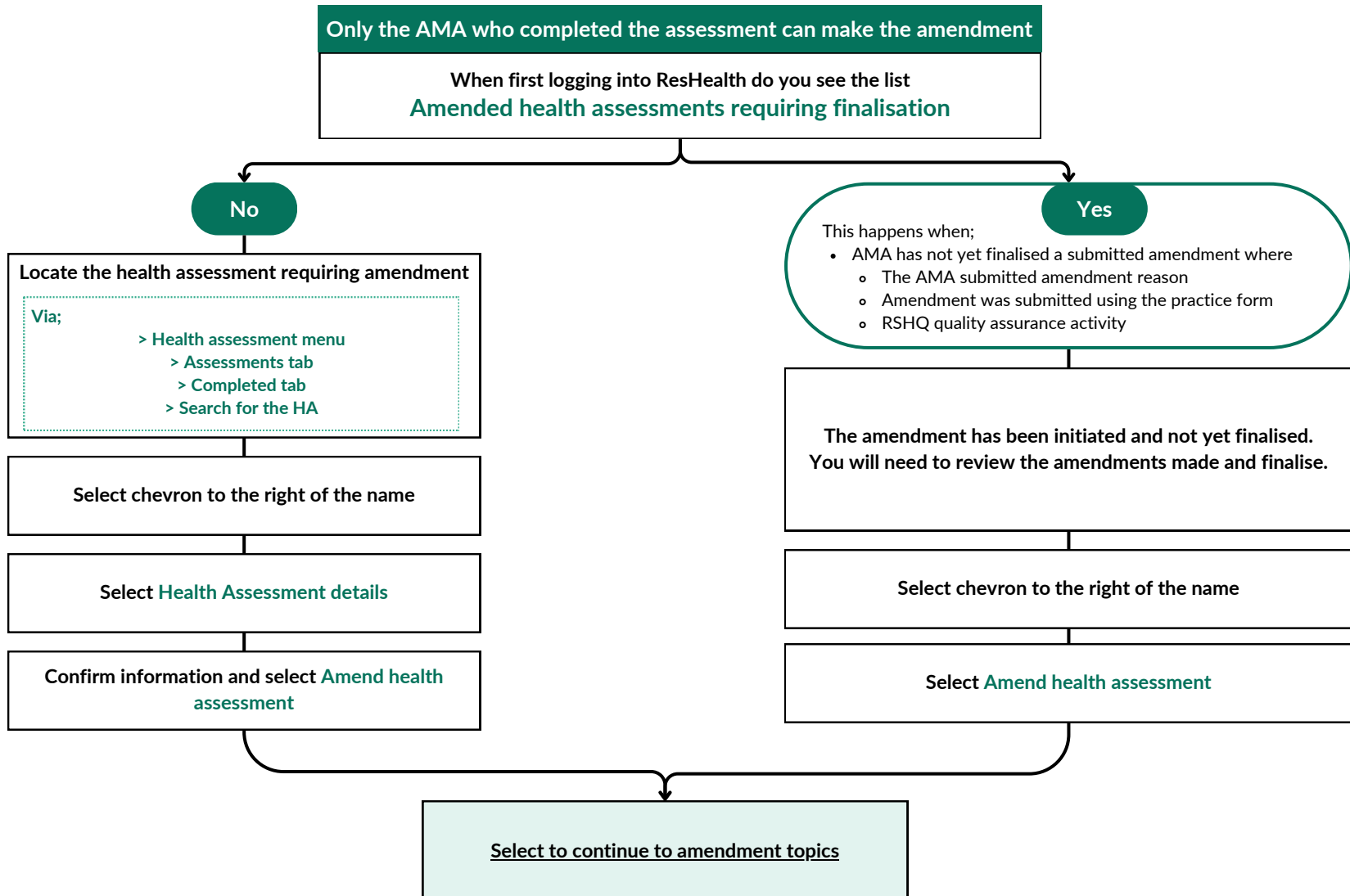


Amendment overview



Fact Sheet #1

Starting the amendment



Amendment topics

For more information on the amendment topic, select the relevant fact sheet

Amendment overview

Starting the amendment	Fact Sheet #1
------------------------	-------------------------------

Amending the examination section

Amending the examination section	Fact Sheet #2
----------------------------------	-------------------------------

I need to make an amendment to the spirometry	Fact Sheet #3
---	-------------------------------

I need to make an amendment to the chest X-ray	Fact Sheet #3
--	-------------------------------

I need to make an amendment to a full health assessment	Fact Sheet #4
---	-------------------------------

I need to make an amendmt to HA that reused information	Fact Sheet #5
---	-------------------------------

I need to make an amendment to a subsequent HA	Fact Sheet #6
--	-------------------------------

Amending documents

I need to replace/delete/upload a document	Fact Sheet #7
--	-------------------------------

I need to grant access to my staff to contribute to amend	Fact Sheet #8
---	-------------------------------

My practice staff needs to contribute to an amendment	Fact Sheet #9
---	-------------------------------

Amending the Assessment section

I need to make an amendment to the assessment section	Fact Sheet #10
---	--------------------------------

Amendment is related to referral for further assessment	Fact Sheet #11
---	--------------------------------

Amendment is related to mines rescue	Fact Sheet #12
--------------------------------------	--------------------------------

Amendment is related to restrictions	Fact Sheet #13
--------------------------------------	--------------------------------

Amendment is related to the next full periodic date	Fact Sheet #14
---	--------------------------------

Amendment is related to the subsequent review decisions	Fact Sheet #15
---	--------------------------------

Finalising amendments

I need to finalise my amendments	Fact Sheet #16
----------------------------------	--------------------------------

Outcome of finalised amendments

Outcome of finalising my amendments	Fact Sheet #17
-------------------------------------	--------------------------------

Examination section amendments

For more information on the amendment topic, select the relevant fact sheet

Previous topic

[Amendment overview](#)

Amending the examination section

Amending the examination section

[Fact Sheet #2](#)

I need to make an amendment to the spirometry

[Fact Sheet #3](#)

I need to make an amendment to the chest X-ray

[Fact Sheet #3](#)

I need to make an amendment to a full health assessment

[Fact Sheet #4](#)

I need to make an amendmt to HA that reused information

[Fact Sheet #5](#)

I need to make an amendment to a subsequent HA

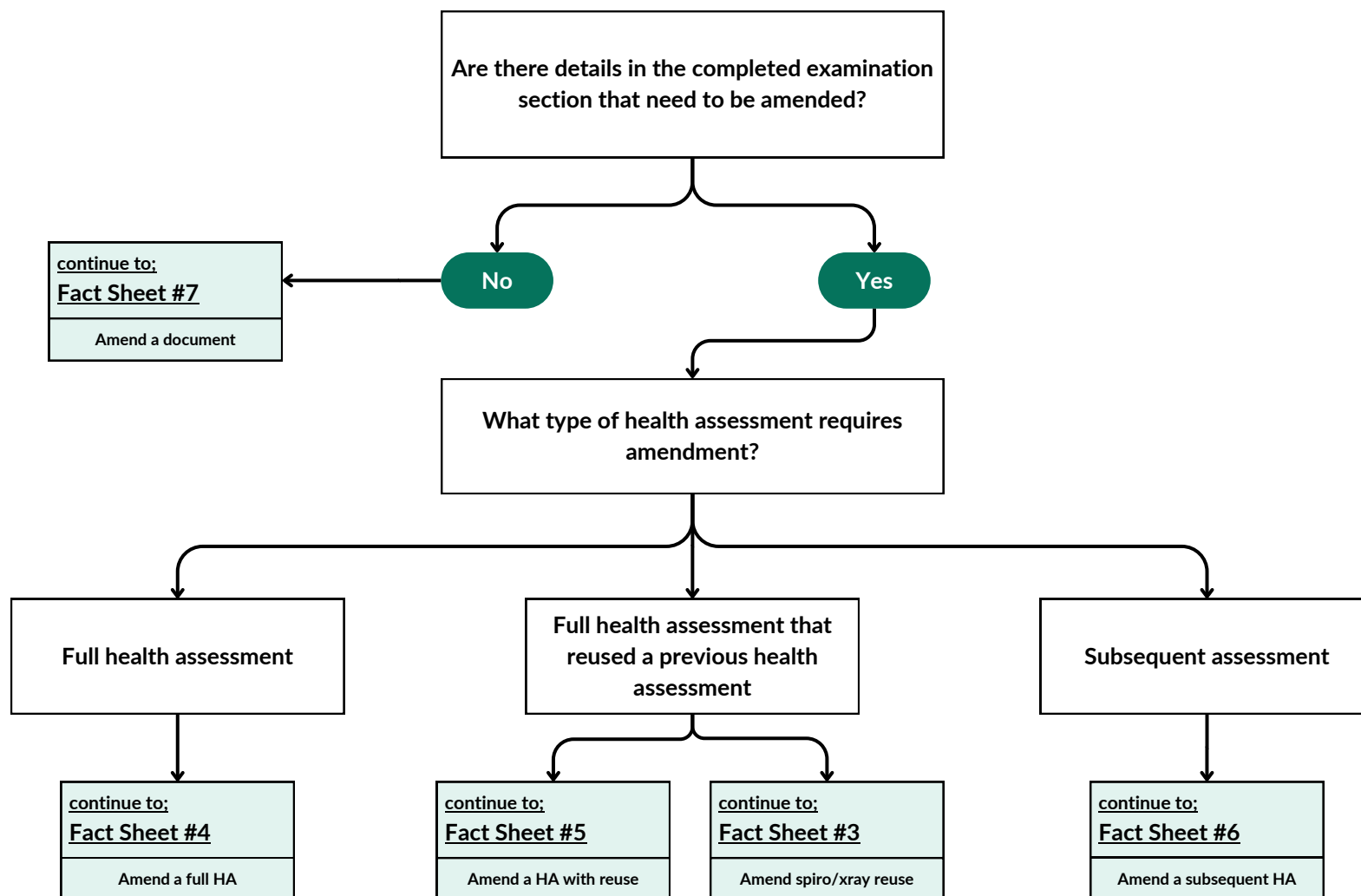
[Fact Sheet #6](#)

Next topic

[Replace/delete/upload a document](#)

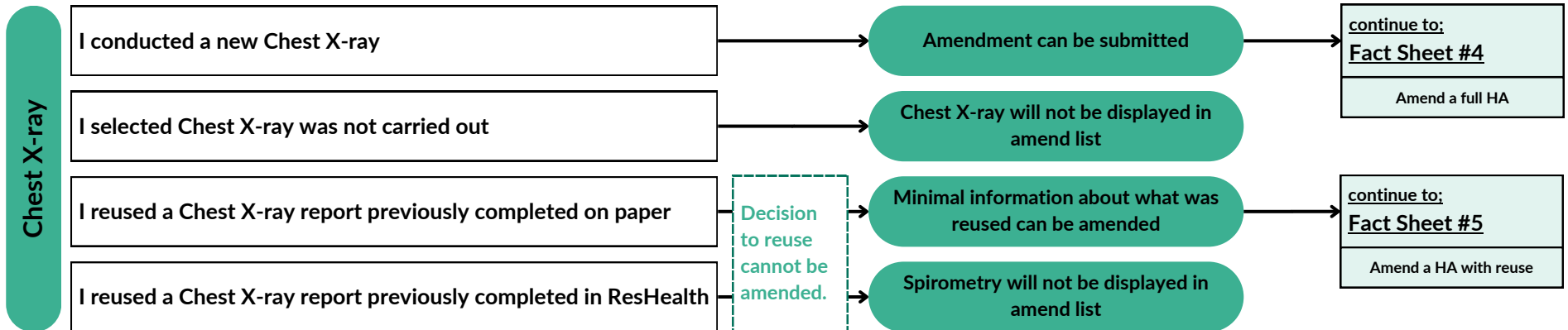
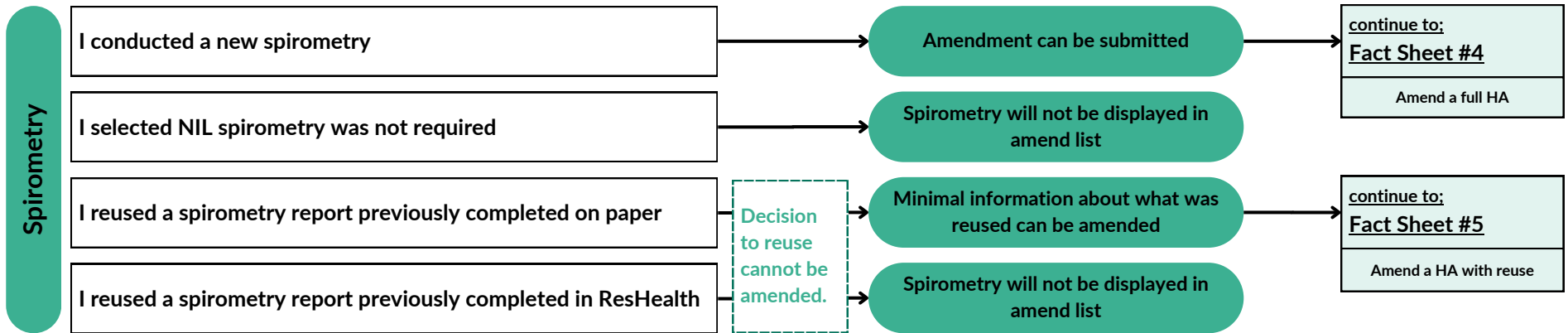
Fact Sheet #2

Amending the examination section



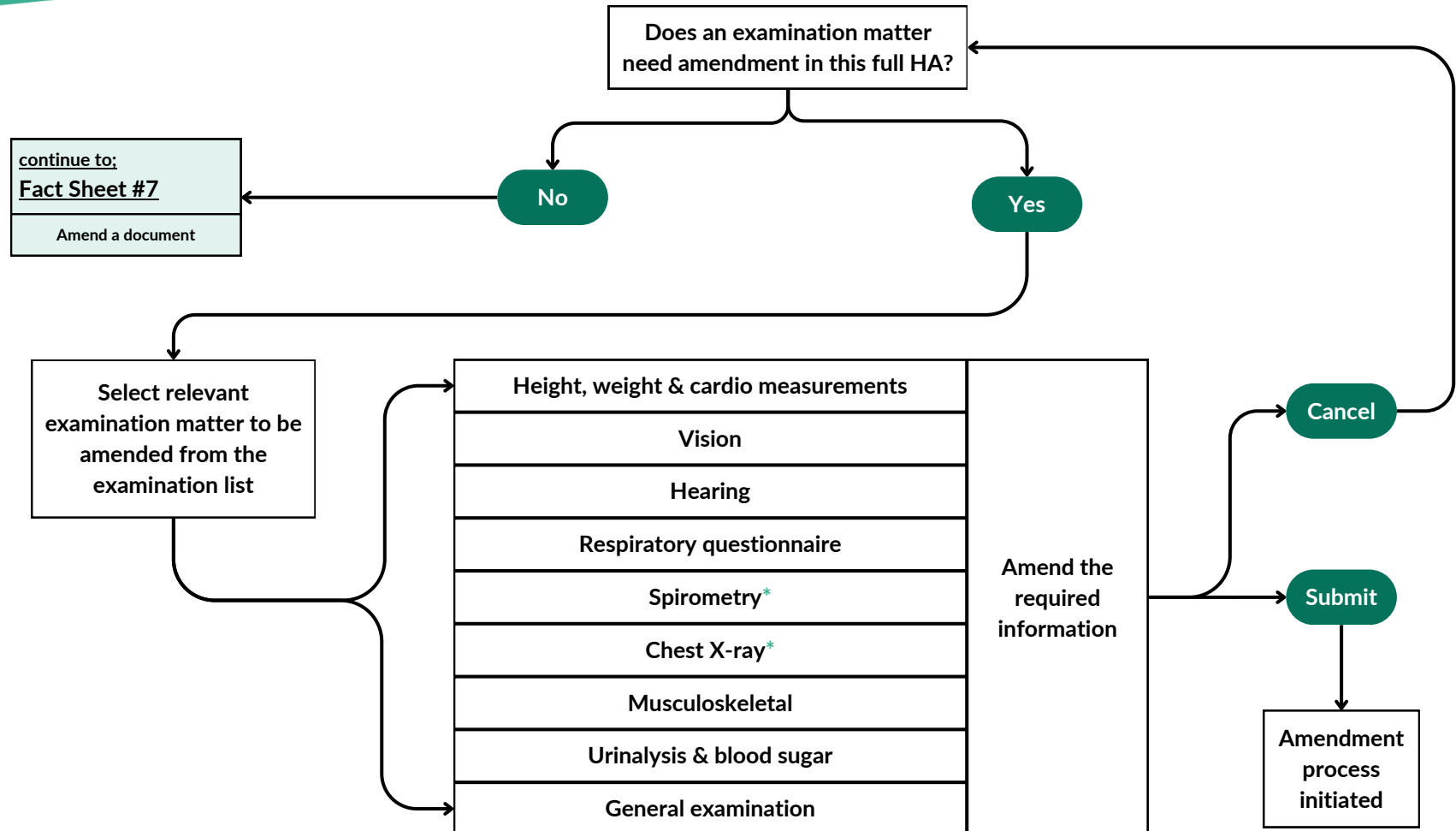
Fact Sheet #3

Spirometry & Chest X-ray amendments



Fact Sheet #4

Amending a full health assessment



* Amendments made may trigger the HA Report to be re-generated

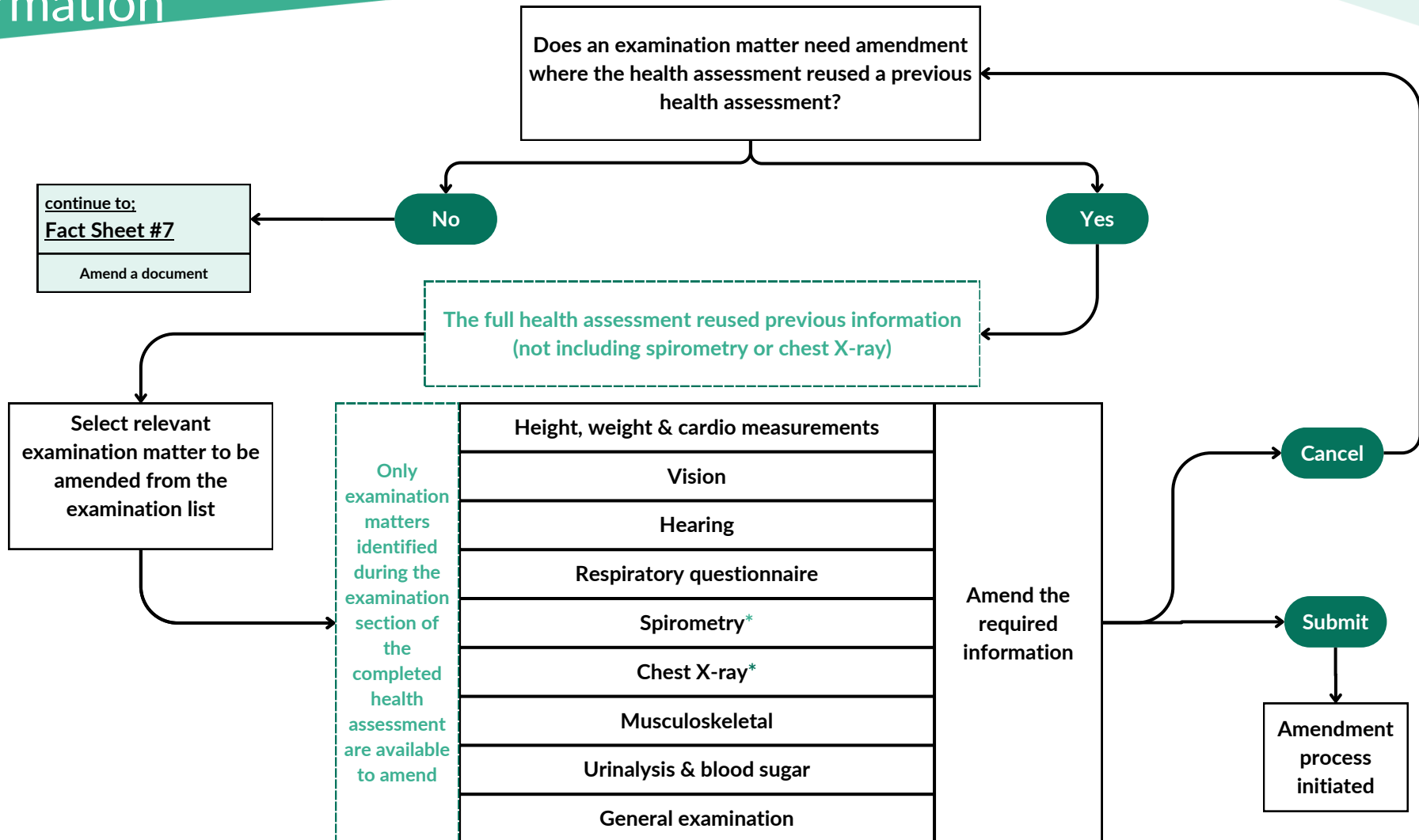
continue to:
Fact Sheet #17

* Spirometry/Chest X-ray not completed

continue to:
Fact Sheet #3

Fact Sheet #5

Amendments to a HA that reused information



* Amendments made may trigger the HA Report to be re-generated

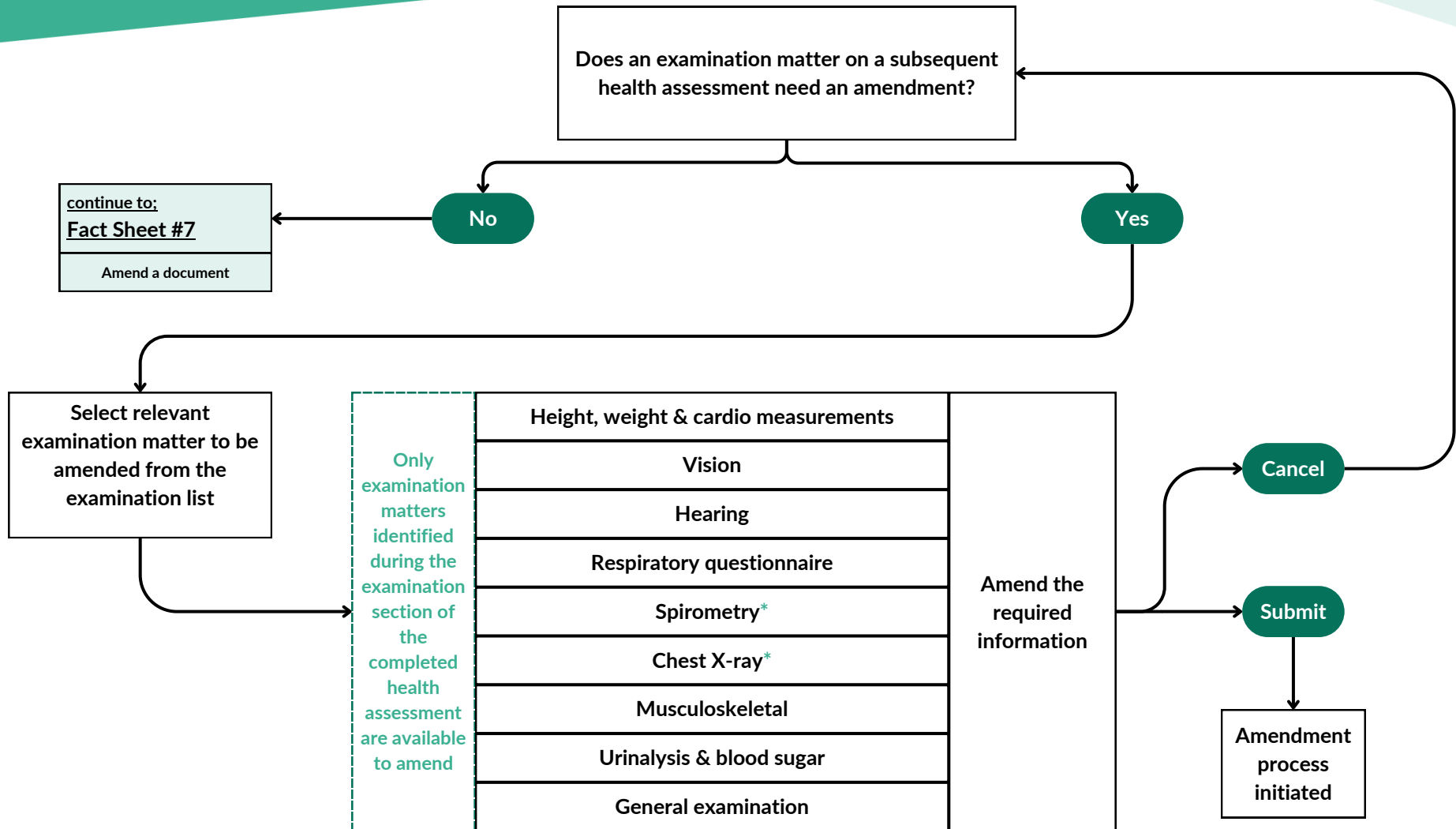
continue to:
Fact Sheet #17

* Spirometry/Chest X-ray not completed

continue to:
Fact Sheet #3

Fact Sheet #6

Amendments to a subsequent



* Amendments made may trigger the HA Report to be re-generated

continue to:
Fact Sheet #17

* Spirometry/Chest X-ray not completed

continue to:
Fact Sheet #3

Manage documents amendments

For more information on the amendment topic, select the relevant fact sheet

Previous topic

[Amending the examination section](#)

Amending documents

I need to replace a document

[Fact Sheet #7](#)

I need to delete a document

[Fact Sheet #7](#)

I need to upload a document

[Fact Sheet #7](#)

I need to grant access to my staff to contribute to amend

[Fact Sheet #8](#)

My practice staff needs to contribute to an amendment

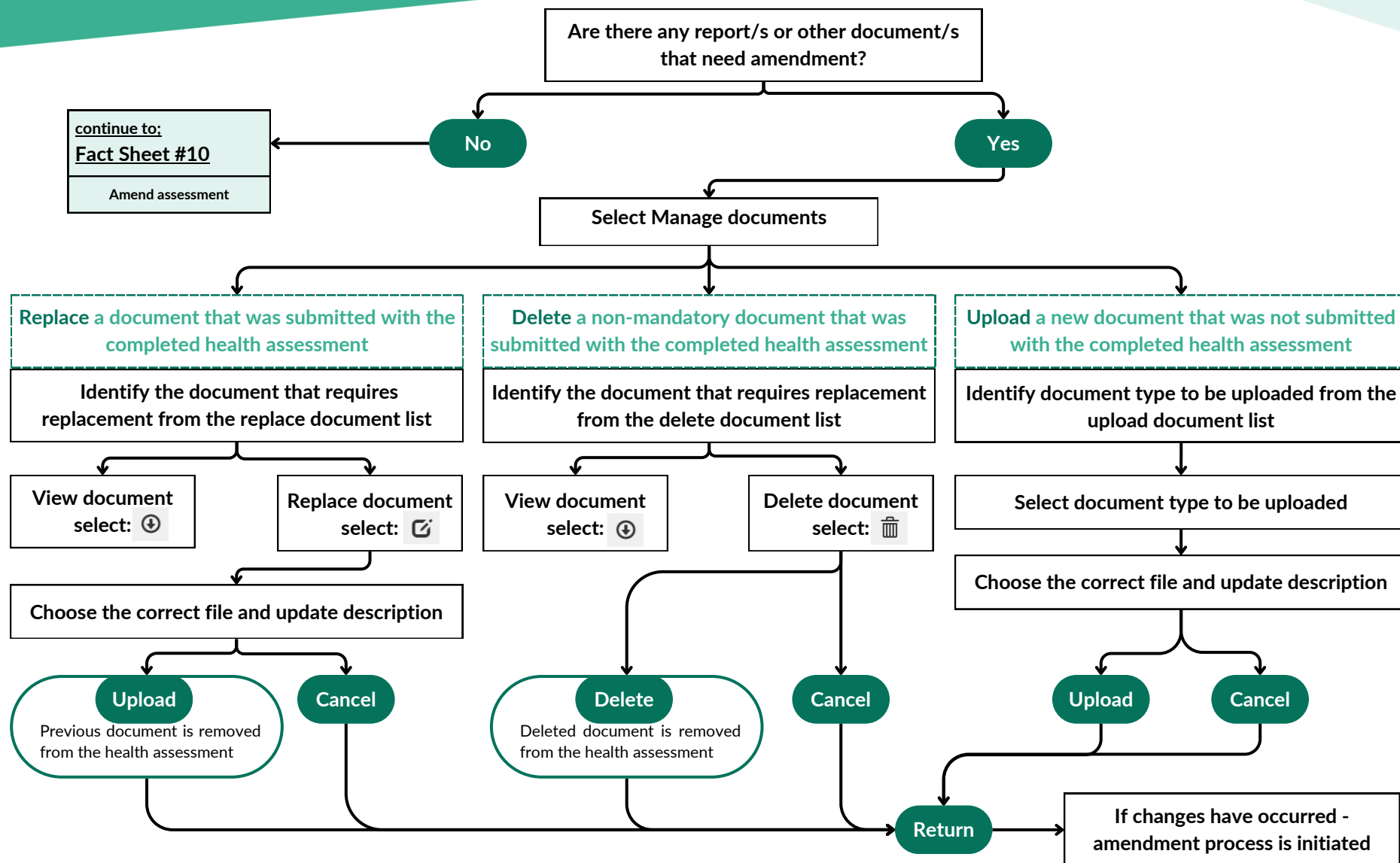
[Fact Sheet #9](#)

Next topic

[Amending the assessment section](#)

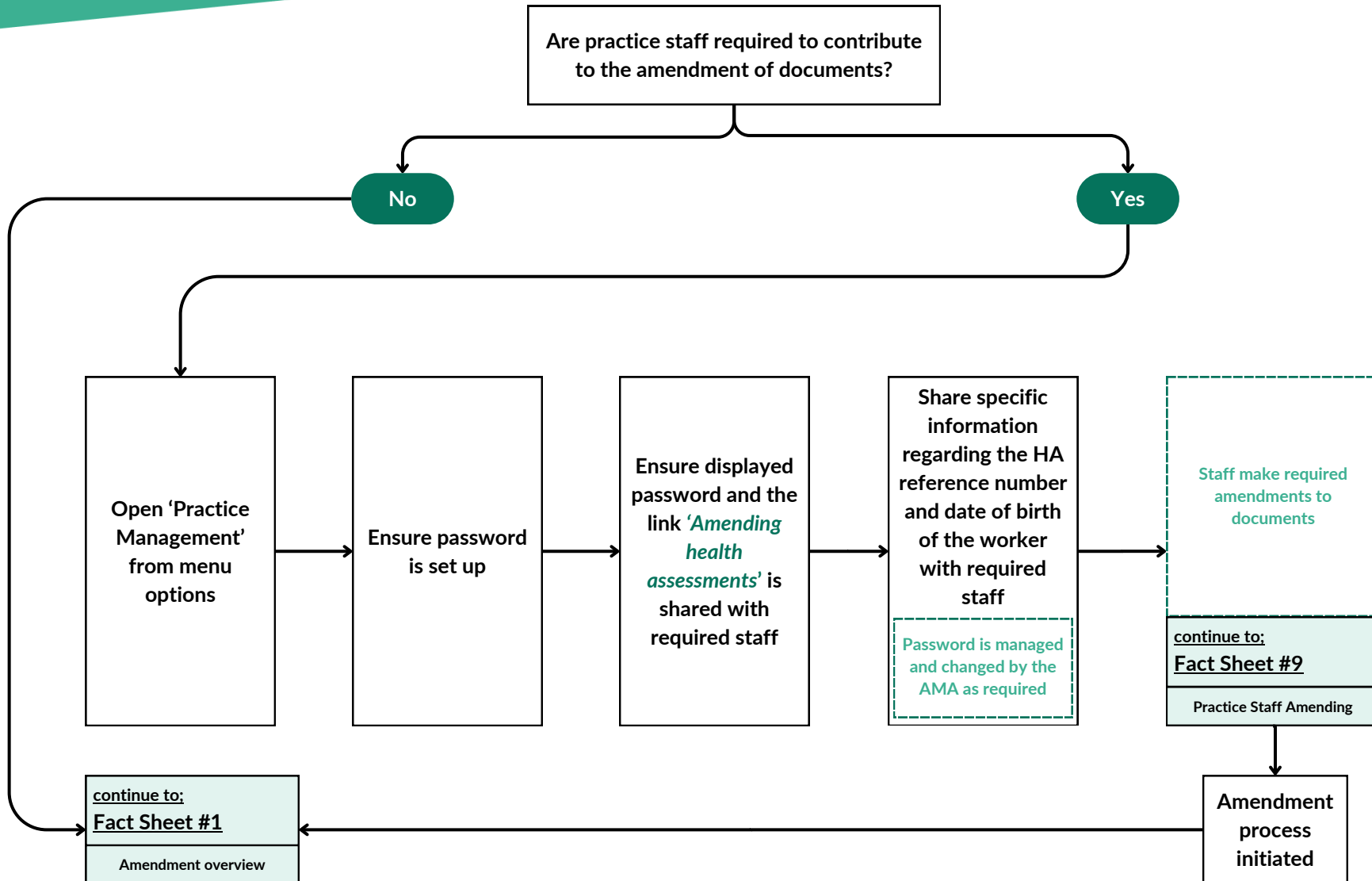
Fact Sheet #7

AMA amending a document



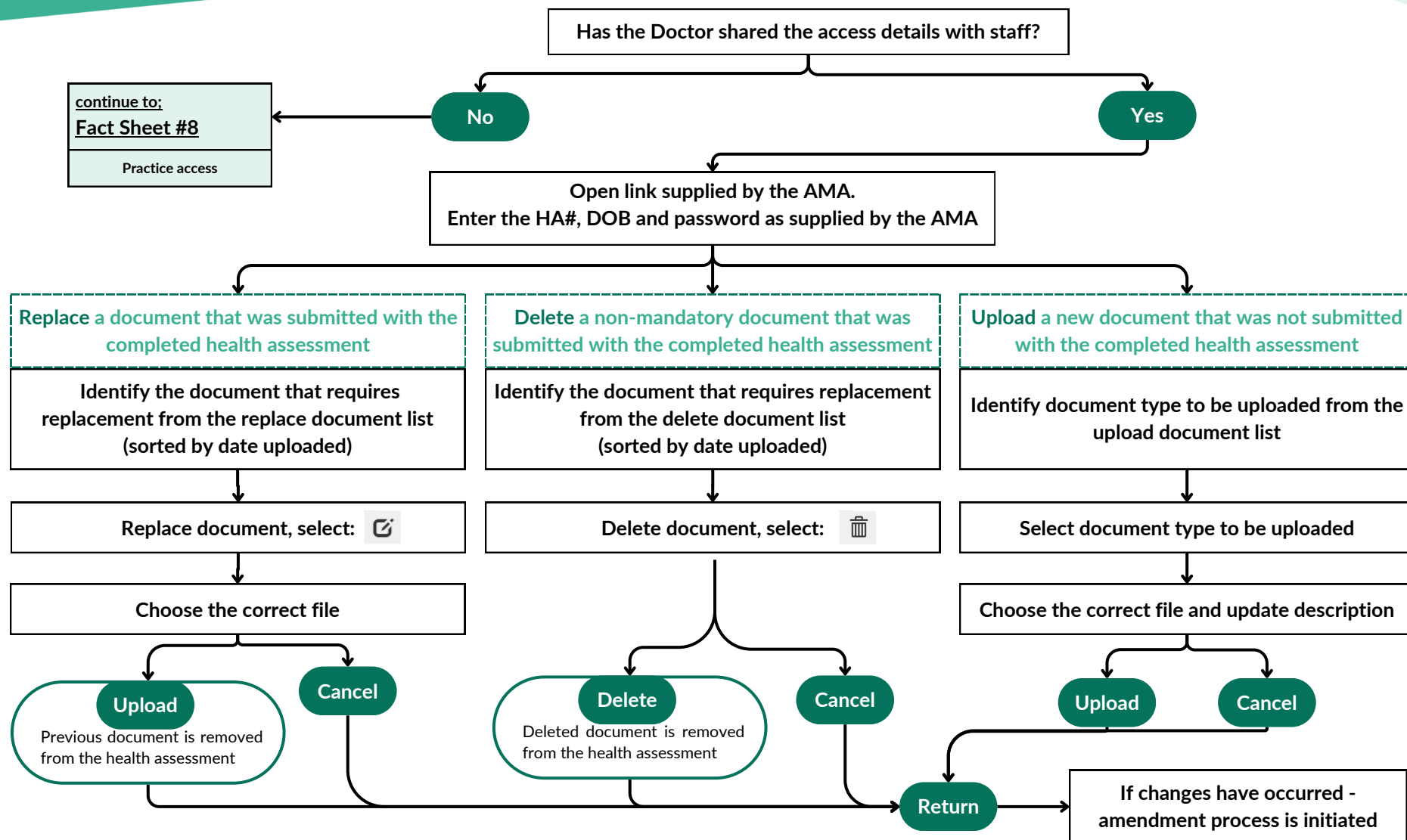
Fact Sheet #8

AMA grants practice staff access



Fact Sheet #9

Practice staff amending a document



Amending the assessment section

For more information on the amendment topic, select the relevant fact sheet

Previous topic

[Amending manage documents](#)

Amending the Assessment section

I need to make an amendment to the assessment section	<u>Fact Sheet #10</u>
---	---------------------------------------

Amendment is related to referral for further assessment	<u>Fact Sheet #11</u>
---	---------------------------------------

Amendment is related to mines rescue	<u>Fact Sheet #12</u>
--------------------------------------	---------------------------------------

Amendment is related to restrictions	<u>Fact Sheet #13</u>
--------------------------------------	---------------------------------------

Amendment is related to the next full periodic date	<u>Fact Sheet #14</u>
---	---------------------------------------

Amendment is related to the subsequent review decisions	<u>Fact Sheet #15</u>
---	---------------------------------------

Next topic

[Finalising the amendment](#)

Fact Sheet #10

Amending the assessment section

Are there details in the completed assessment section require amendment?

No

Yes

Each page of the assessment section must be reviewed before finalising the amendment

Select Review assessment and finalise

Respiratory exam review - Spirometry

will only appear if spirometry was conducted for this HA

Respiratory exam review - X-ray

will only appear if chest X-ray was carried out for this HA

Referral for further assessment

Respiratory exam review - Summary

Determining fitness for duty

Parent HA details

will only appear if this is a subsequent from a paper HA

Declaration

continue to;
[Fact Sheet #11](#)

Amend referral

continue to;
[Fact Sheet #12](#)

Amend mines rescue

continue to;
[Fact Sheet #13](#)

Amend restrictions

continue to;
[Fact Sheet #14](#)

Amend periodic date

continue to;
[Fact Sheet #15](#)

Amend subsequent decision

Close

Can be selected on any page.
Information is saved. Returned to amend summary page

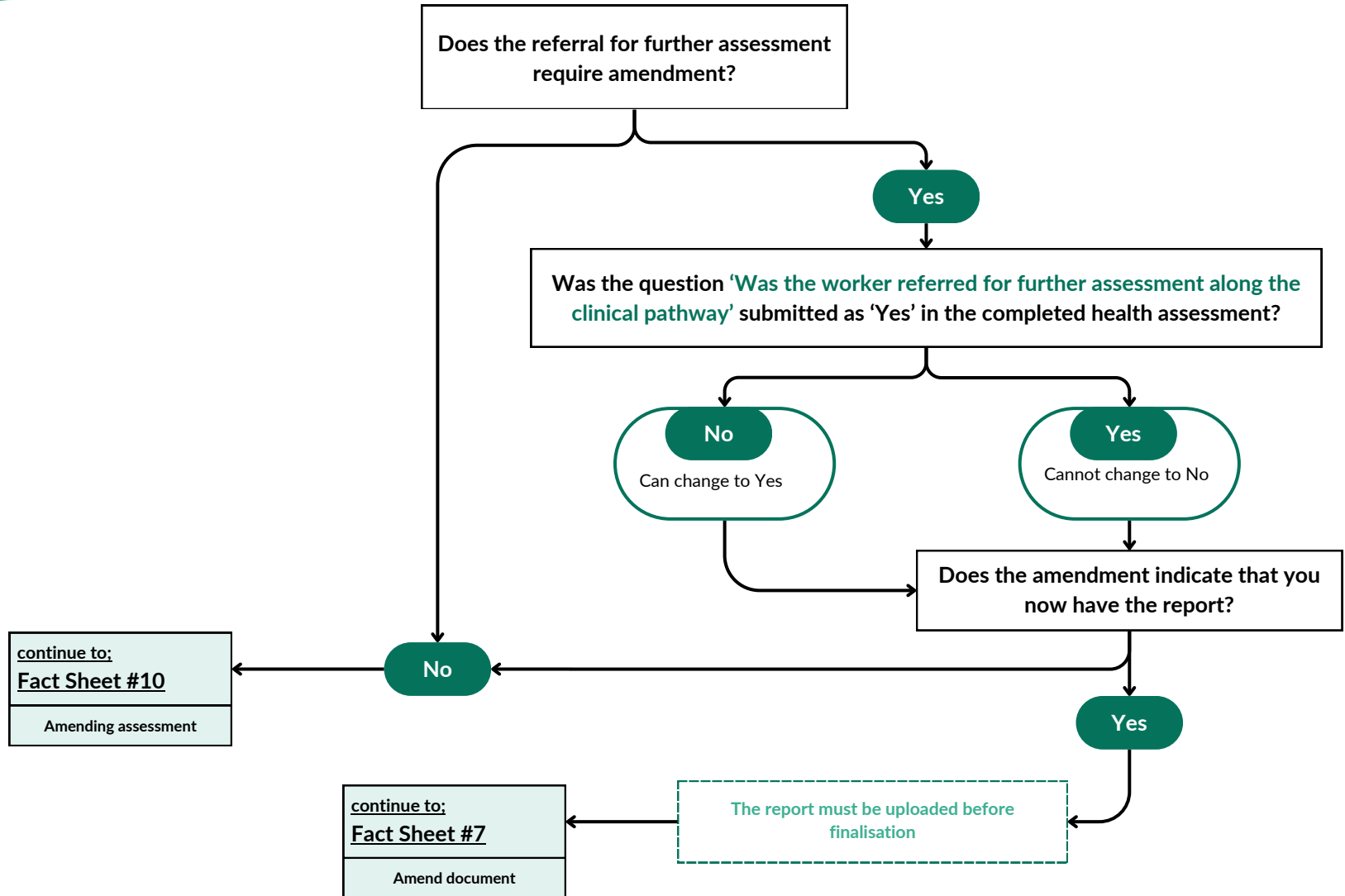
continue to;
[Fact Sheet #16](#)

Finalising the amendment

Finalise

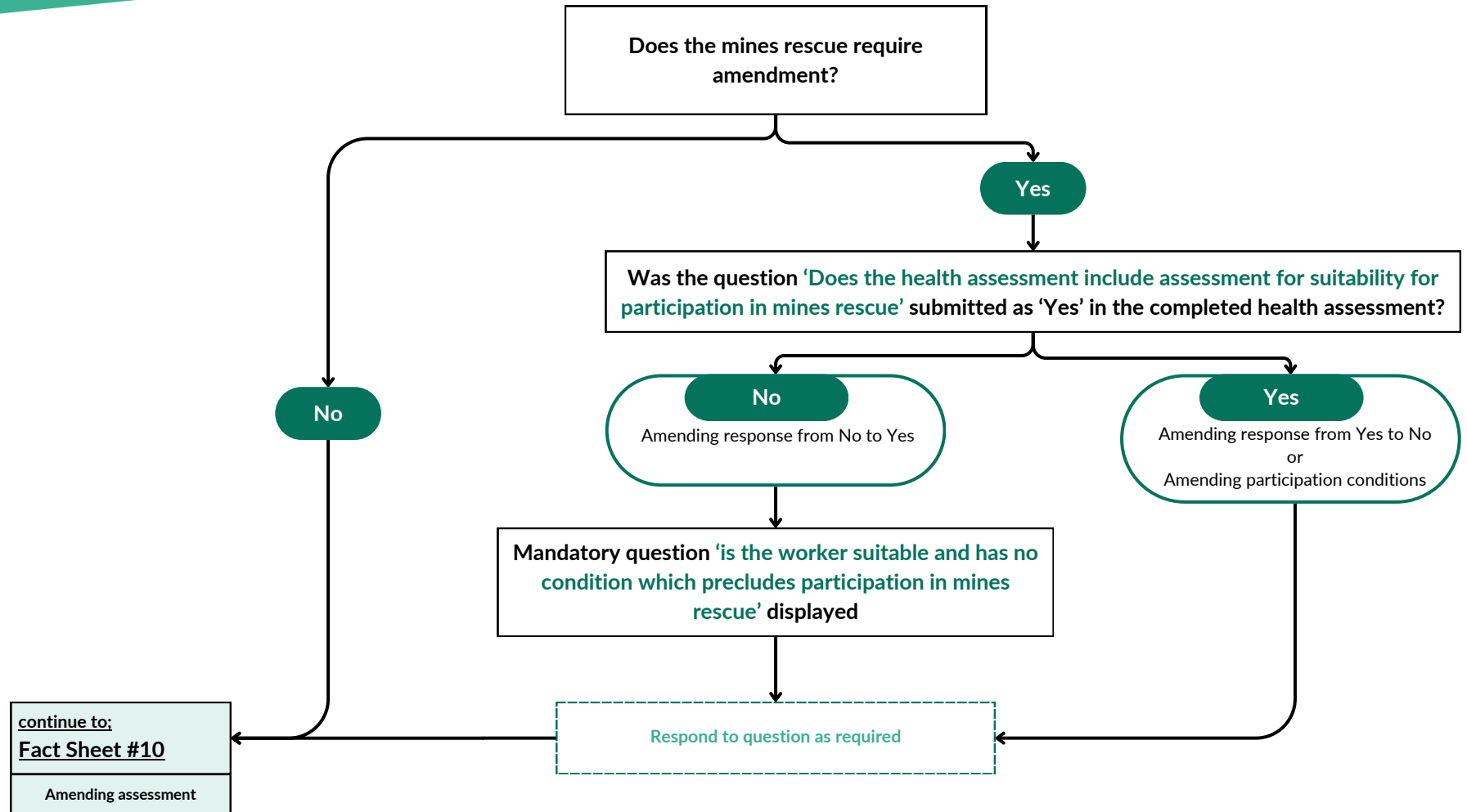
Fact Sheet #11

Amending referral for further assessment



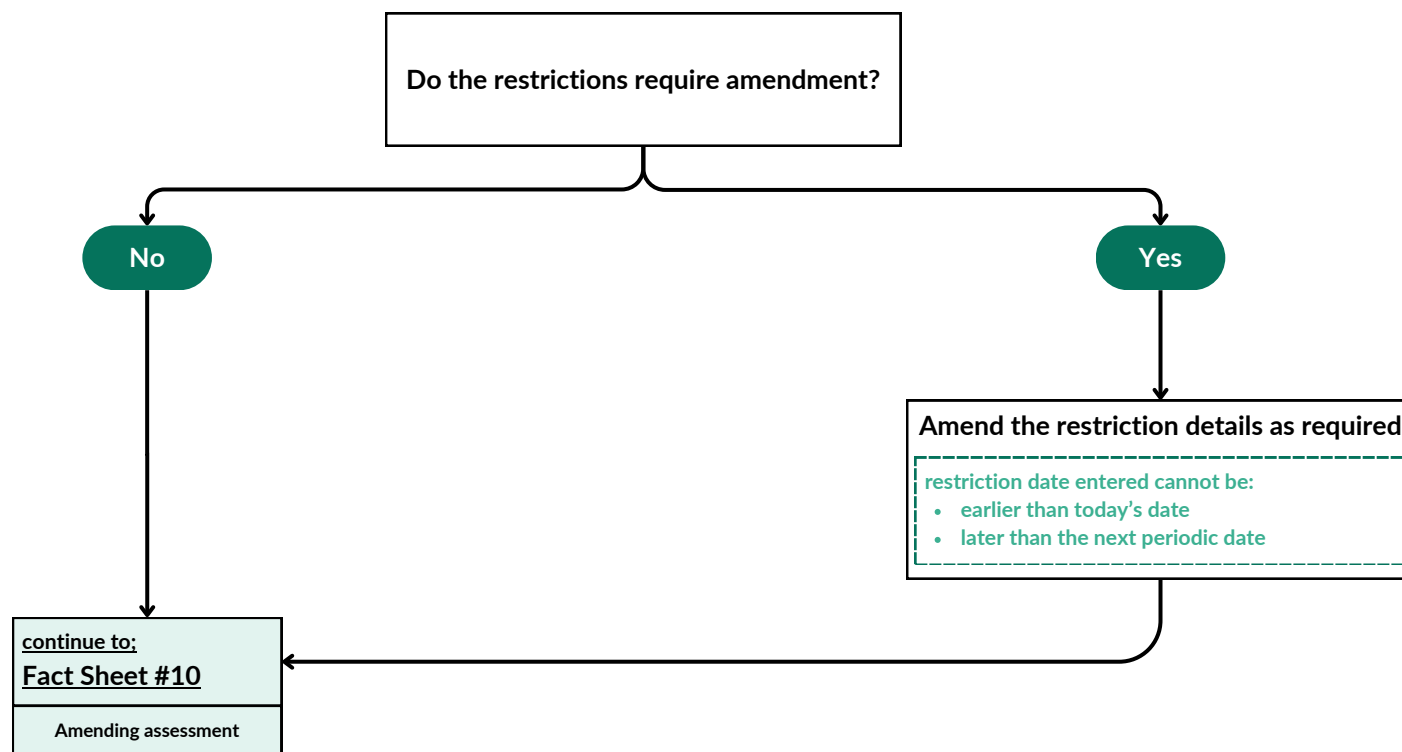
Fact Sheet #12

Amending mines rescue



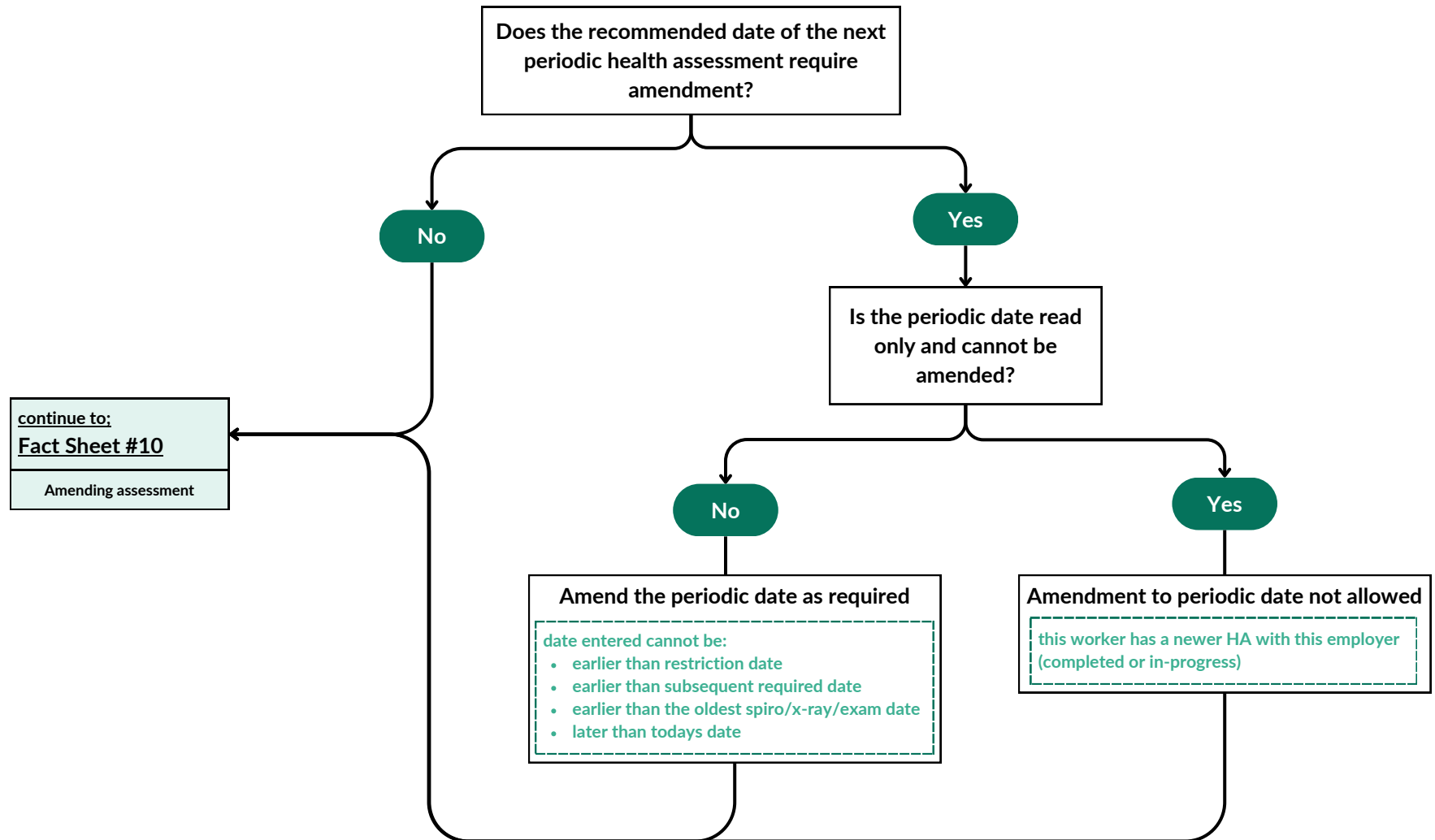
Fact Sheet #13

Amending restrictions



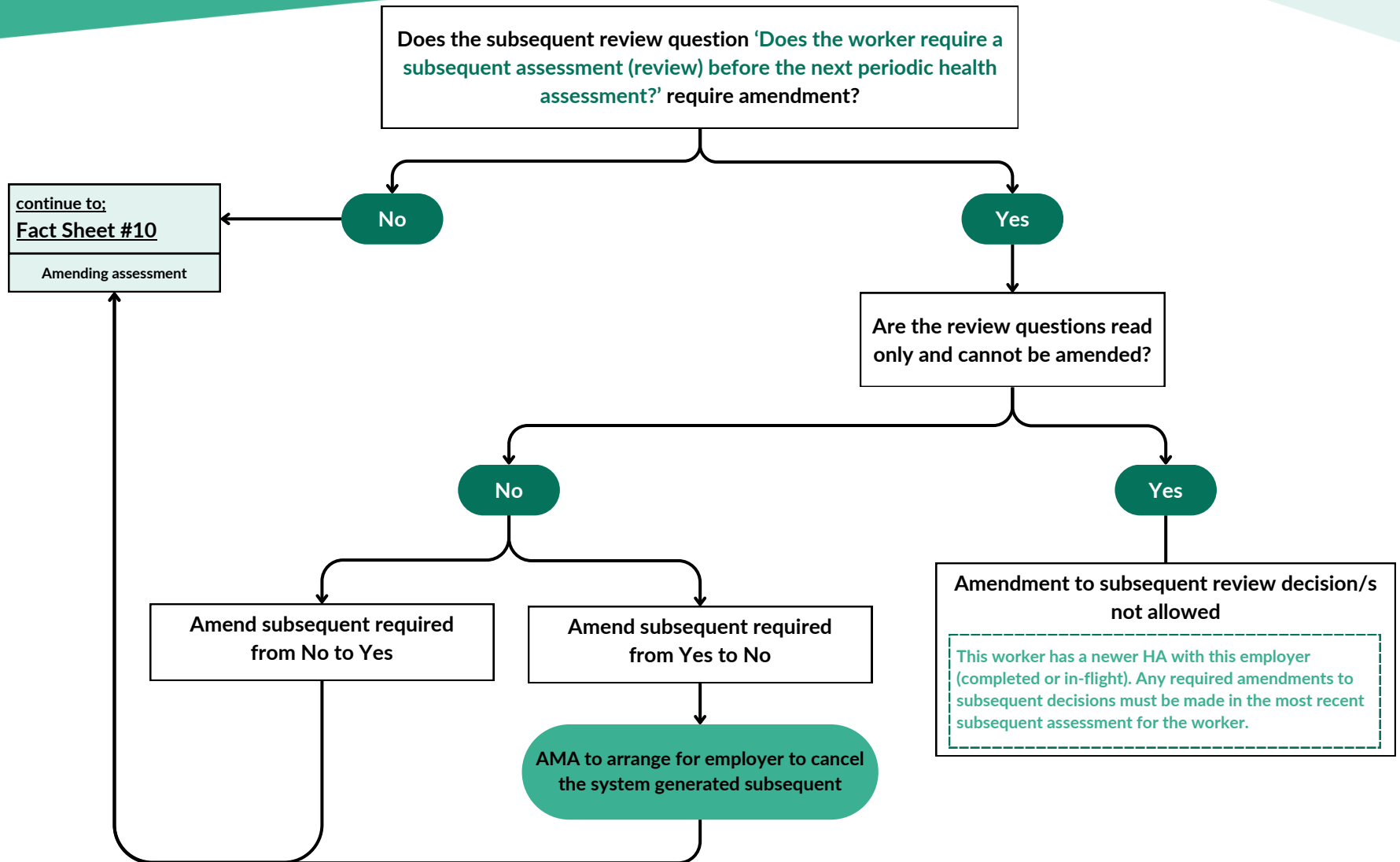
Fact Sheet #14

Amending periodic dates



Fact Sheet #15

Amending subsequent review decision



Finalising the amendment

For more information on the amendment topic, select the relevant fact sheet

Previous topic

[Amending the assessment section](#)

Amending the assessment section

[I need to finalise my amendments](#)

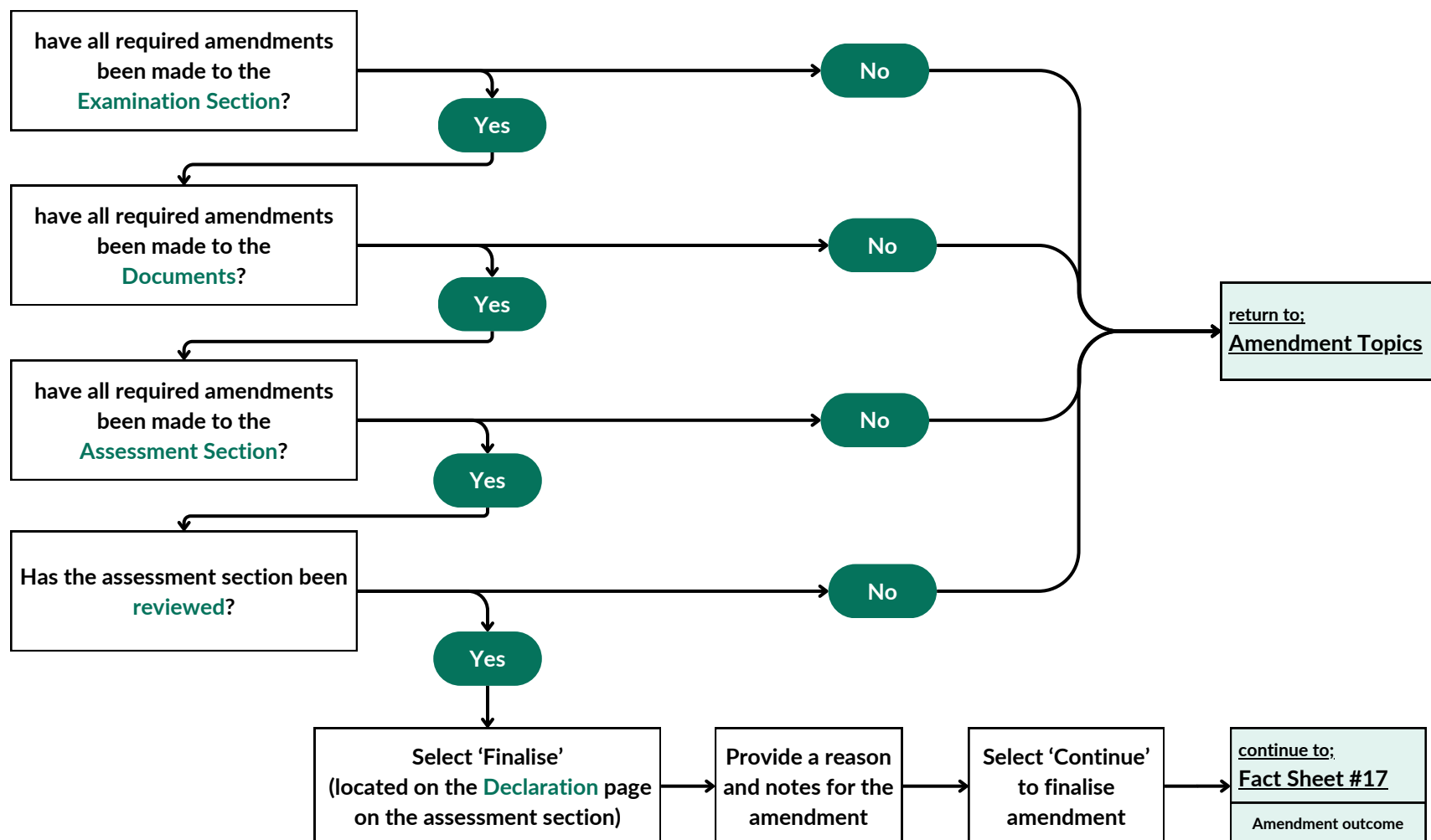
[Fact Sheet #16](#)

Next topic

[Outcome of finalising an amendment](#)

Fact Sheet #16

Finalising the amendment



Outcome of finalising an amendment

For more information on the amendment topic, select the relevant fact sheet

Previous topic

[Finalising an amendment](#)

Amendment outcome

Outcome of finalising an amendment

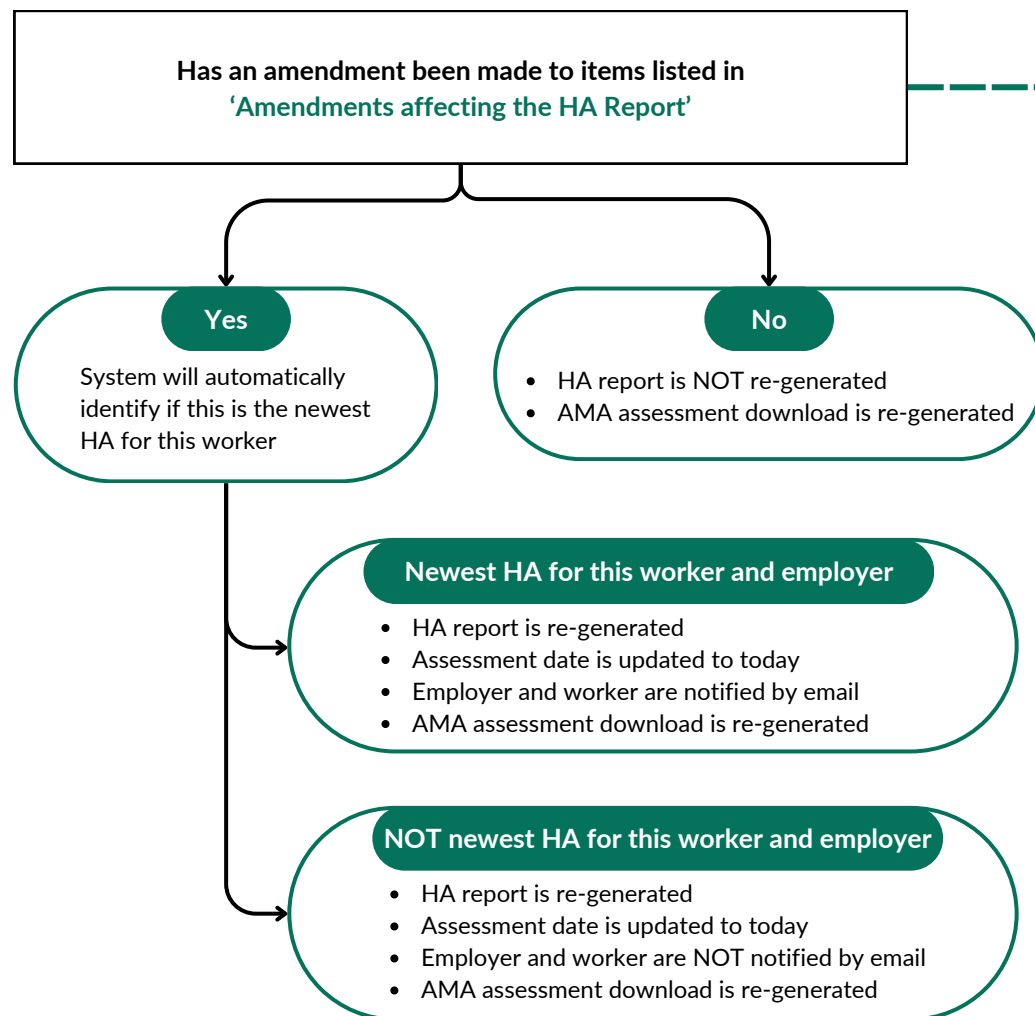
[Fact Sheet #17](#)

Return to beginning

[Amendment overview](#)

Fact Sheet #17

Finalised amendment outcome



Amendments affecting the HA Report

Amendments made to these **Examination** section questions below trigger 'yes' workflow

Spirometry	spiro date
	spiro test quality
Chest X-ray	chest X-ray date
	ILO date
	Image quality

Amendments made to these **Assessment** section questions below trigger 'yes' workflow

Respiratory exam review - Summary	any amendment
Determining fitness for duty	
Parent HA details	
Declaration	