

June 2023 Incident periodical

Recent High Potential Incidents
Learnings and Recommendations
Communications

Incidents occurred in April 2023

Coal Inspectorate



Resources Safety & Health
Queensland

1. Incidents – Uncontrolled Movement of Mobile plant

The photographs below are of three separate incidents that occurred in April 2023.



Recommendations

- Ensure critical controls for the uncontrolled movement of mobile equipment are effective in minimising risk.
- Ensure the mines SHMS provides for appropriate action to be taken if the SHMS risk control measures are identified as not being effectively applied.

Site Senior Executive



- Ensure the critical controls for the uncontrolled movement of mobile equipment are continually being verified.
- Ensure effective supervision is being provided.
- During work area inspections, ensure all potential hazards have been identified by coal mine workers

Supervisors



- Ensure that all hazards are identified and effective controls have been put in place to manage risks in your work area.
- Carry out activities and work in a way that does not expose coal mine workers to an unacceptable level of risk.
- Cease work immediately if you believe a hazard is not being adequately controlled.

Coal Mine Workers



2. Incidents – Collisions (Unplanned Movement of Equipment)

The photographs below are of incidents that occurred at two mines in April 2023.



Recommendations

- Ensure the mines SHMS provides adequate monitoring for effective application of risk control measures to prevent unintended movement of mobile equipment.
- Establish and implement effective controls that minimise the risk of collisions.
- Consider implementing higher order controls, such as collision avoidance systems.

Site Senior Executive



- Regularly audit dump & dig face operating standards for compliance with site procedures.
- Continually monitor and review the effectiveness of risk control measures, and take appropriate corrective and preventive action where non-conformance is identified.

Supervisors

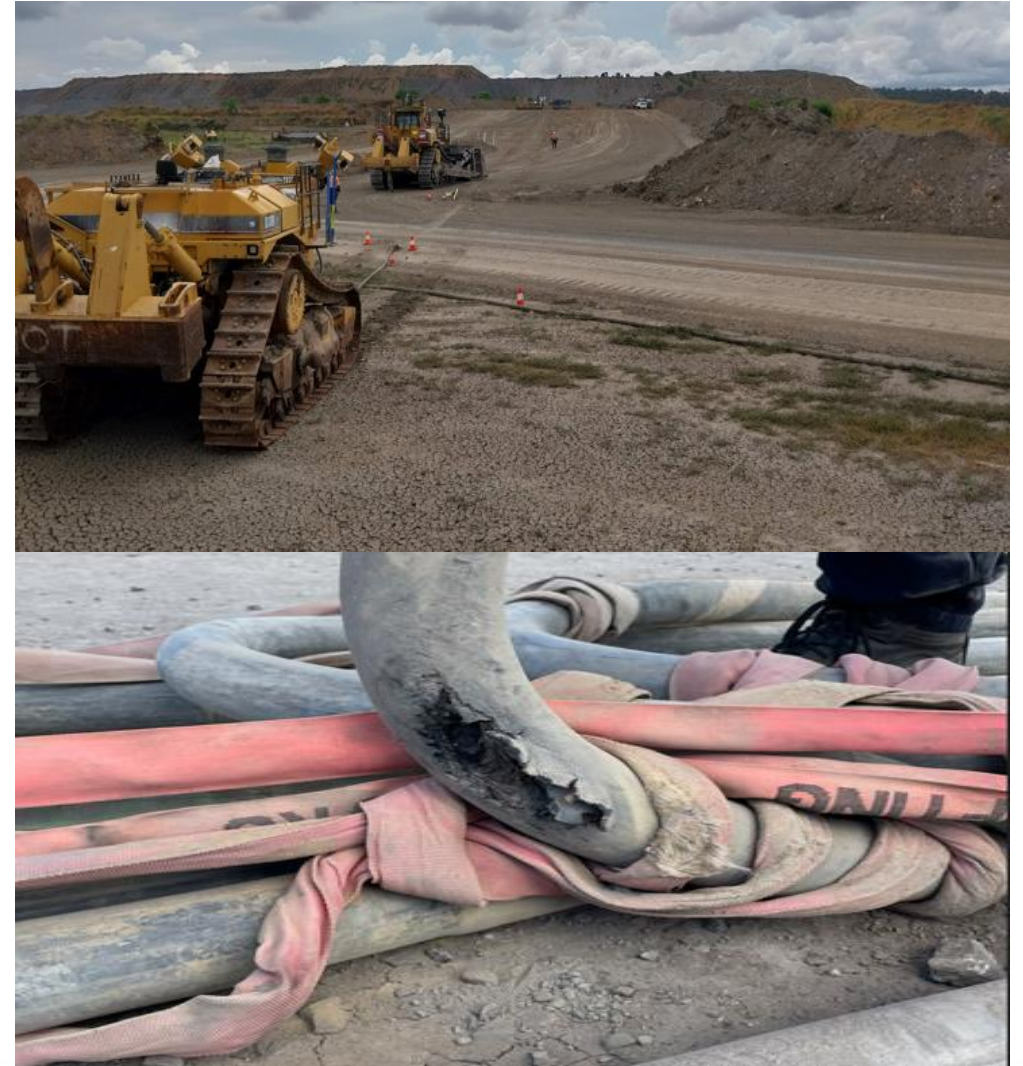


- Carry out their activities / work in a way that does not expose themselves or someone else to an unacceptable level of risk.
- Follow site procedures and work instructions.
- Maintain situational awareness and positive radio communications, including confirmation of radio calls.

Coal Mine Workers



3. Incident – Cable Damage



Recommendations

- Ensure that the SHMS has effective controls in place to manage high voltage cables.
- Ensure that Supervisors are competent in assessing the risks and hazards associated with the work environment under their control.

Site Senior Executive



- Ensure cable management procedures are being effectively implemented by coal mine workers.
- Ensure effective supervision is being conducted in work areas where high voltage trailing cables are located.

Supervisors



- Inspect your work area for potential hazards around high voltage trailing cables.
- Cease work immediately if you believe a hazard is not being adequately controlled .
- Inform your supervisor of any concerns about the work environment.

Coal Mine Workers



4. Incident – Collision with Electrical Equipment



Recommendations

- Ensure the mine's safety and health management system has effective procedures for working near power lines.
- Ensure all persons who operate mobile plant are trained and competent and aware of this SOP.

Site Senior Executive



- Verify compliance for procedures for working in the vicinity of High Voltage powerlines.
- Planned work must take in to consideration the proximity of high voltage powerlines.

Supervisors



- Coal mine workers must inspect their work area prior to conducting work.
- Ensure that all hazards are identified and effective controls have been put in place to manage these risks.

Coal Mine Workers



5. Incidents – Unplanned Movements (Tyres)



Recommendations

- Ensure management of critical controls in relation to uncontrolled movement of mobile equipment control are effective in minimising risk.
- Ensure the maintenance system is effective in managing the risk of unplanned movement of equipment.

Site Senior
Executive



- Monitor and verify the controls for the inspection of mobile equipment are effective.
- Ensure retorque periods for tyre tensioning are effective.

Supervisors



- Pre-start inspection of equipment are effective in identifying potential hazards before commencing work.
- Ensure that all hazards are identified and effective controls have been put in place to manage these.
- Inform your supervisor of any concerns about any concerns you may have identified.

Coal Mine
Workers



6. Incident – Unplanned Movement (Micro Sleep)



Recommendations

- Ensure the mine's safety and health management system contains effective procedures and controls for fitness for duty.
- Implement effective controls to mitigate fatigue related issues.

Site Senior Executive



- Ensure CMW's understand the requirements for fitness for duty requirements.
- Monitor adherence to the processes for fatigue management.

Supervisors



- Ensure that presenting to work you have complied with the fitness for duty requirements.
- Inform your supervisor of any concerns about issues related to fitness for work.

Coal Mine Workers



COMMUNICATIONS

- [Reporting HPIs following withdrawal of persons from an underground coal mine](#)
- [Reminder - Implementation of BoI Recommendations for surface operations](#)
- [Obligations for maintaining rescue capability at an underground coal mine](#)
- [Message from the RSTWG for Recognised Standard 02](#)
- Review of Exposure Data for 2022 - [Open Cut](#) / [Underground](#)
- [Commissioner's Queensland mining industry safety reporting survey](#)

RECENT SAFETY ALERTS

Safety Alert 429

Inservice failure of an explosion protected diesel engine safety system

Safety Alert 428

Coal mine worker injured undertaking conveyor belt repairs

Safety Alert 427

Fingertip severed when caught in a motorised hood tarp system

Safety Alert 426

Rare earth magnets

Safety Alert 425

Fall of equipment and persons into a stope void

Recognised Standards

Periodicals

Coal Mining Safety and Health Act 1999

Safety Notices

Board of Examiners

FREE Registration for the PCS Scheme

Mining Hazards Database

To subscribe to communications from the Queensland Mines Inspectorate please email QldMinesInspectorate@rshq.qld.gov.au